



PARTS

CATALOGUE

GS1000W

GOSS INDUSTRIES INC.

6226 Danville Road, Mississauga, Ontario L5T-2H7

Phone: 905-795-9830 x 226 fax: 905-795-9832

email: info@gossindustries.com

www.p3power.ca

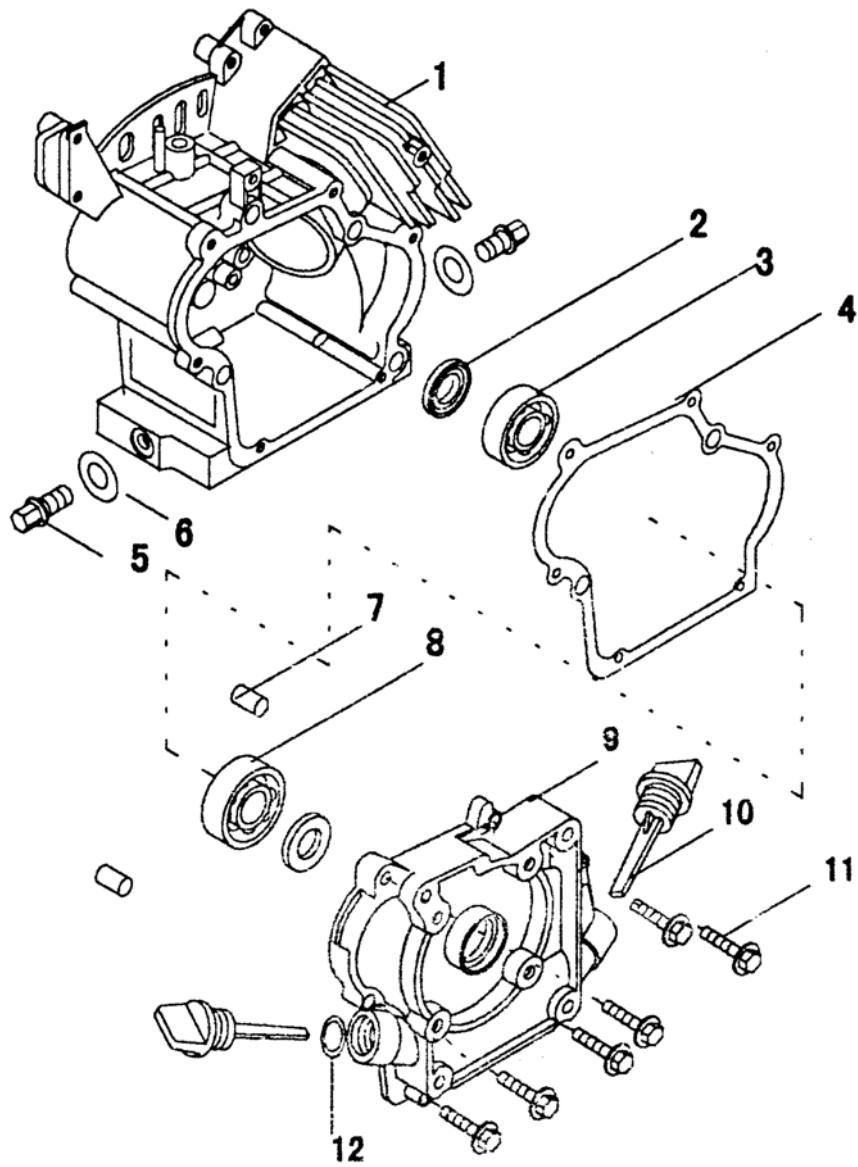


FIG A. CRANKCASE ASSY

REF. NO.	PART NAME	Q'TY
1	Crankcase assy.	1
2	Oil seal	2
3	Bearing 6203	1
4	Crankcase gasket	1
5	Drain bolt	2
6	Washer	2
7	Dowel pin	2
8	Bearing 6203	1
9	Crankcase cover	1
10	Oil level cap assy.	2
11	Flange bolt	6
12	O seal ring	2

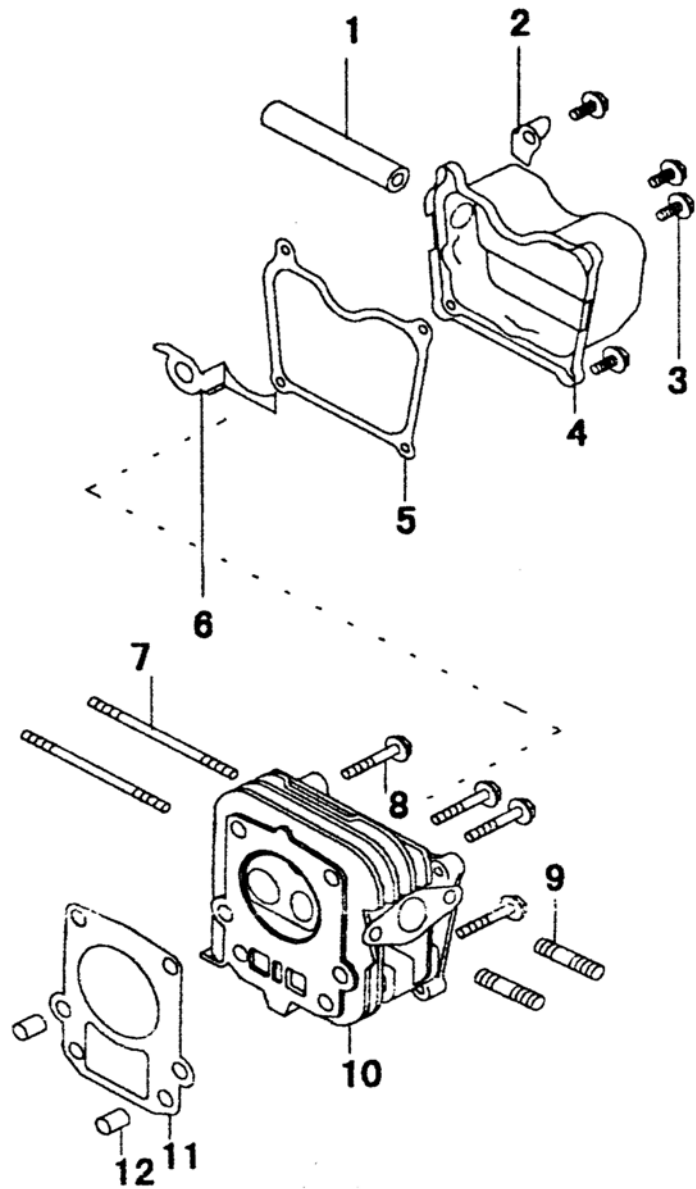


FIG B. CYLINDER HEAD

REF. NO.	PART NAME	Q'TY
1	Recoil pipe	1
2	Wire board	1
3	Flange bolt	4
4	Head cover comp	1
5	Head cover gasket	1
6	Press board	1
7	Bolt M6x90	2
8	Flange bolt	4
9	Bolt M6x38	2
10	Cylinder head assy.	1
11	Cylinder head gasket	1
12	Dowel pin	2

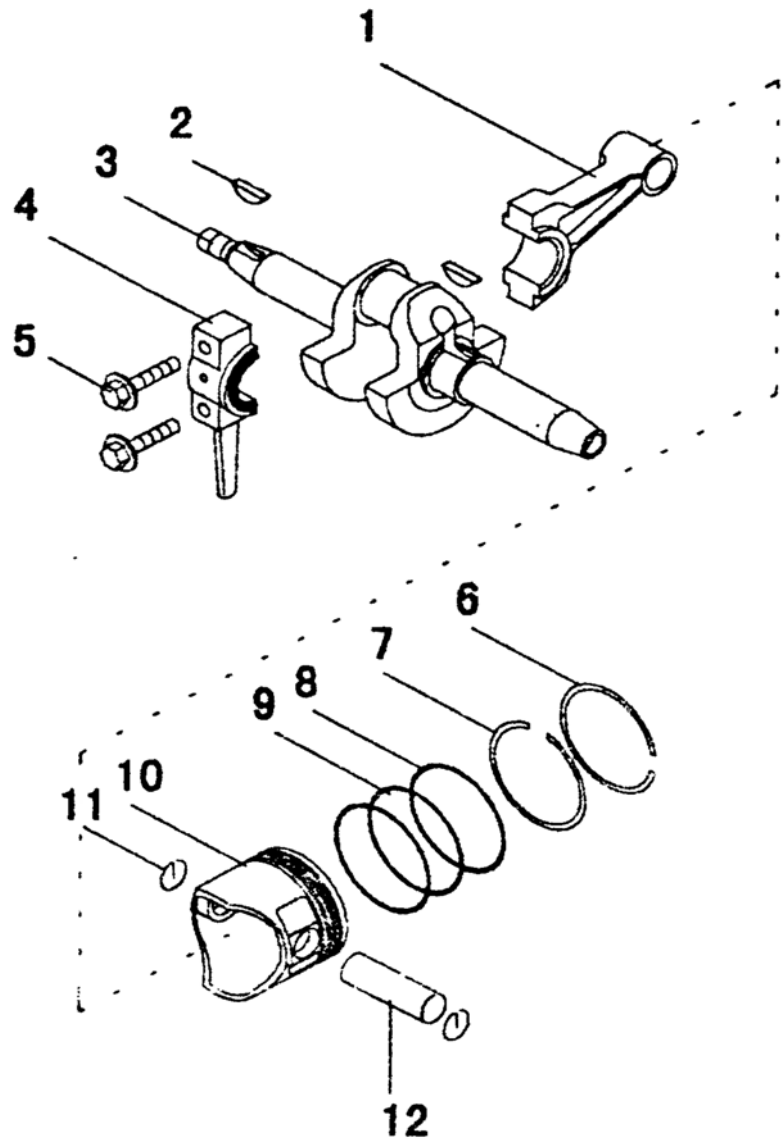


FIG C. CRANKSHAFT PISTON

REF. NO.	PART NAME	Q'TY
1	Connecting rod	1
2	Semicircle key	2
3	Crankshaft assy.	1
4	Connecting rod cover	1
5	Flange bolt	2
6	First ring piston set	1
7	Second ring piston set,	1
8	Oil ring guide slot	1
9	Spring	1
10	Piston	1
11	Piston pin clip	2
12	Piston pin	1

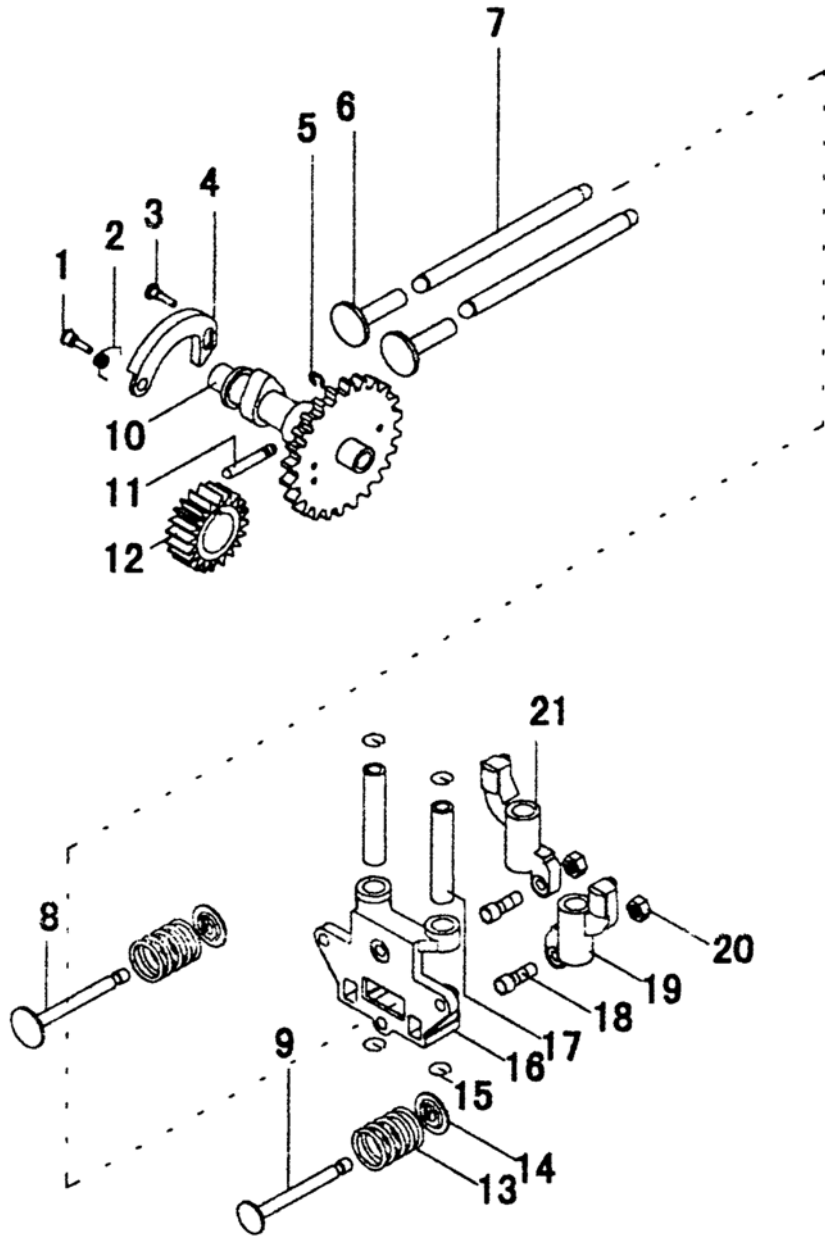


FIG D. CAMSHAFT

REF. NO.	PART NAME	Q'TY
1	Pin A	1
2	Spring	1
3	Pin B	1
4	Slide block	1
5	Lock ring	1
6	Valve lifter	2
7	Push rod	2
8	Intake valve	1
9	Exhaust valve	1
10	Camshaft	1
11	Pin	1
12	Pinion	1
13	Valve spring	2
14	Spring retainers	2
15	Rocker ring	4
16	Rocker seat	1
17	Rocker arm shaft	2
18	Adjusters screw	2
19	Exhaust rocker	1
20	Net M6	2
21	Intake rocker	1
22	Flange bolt	3
23	Flange bolt	1

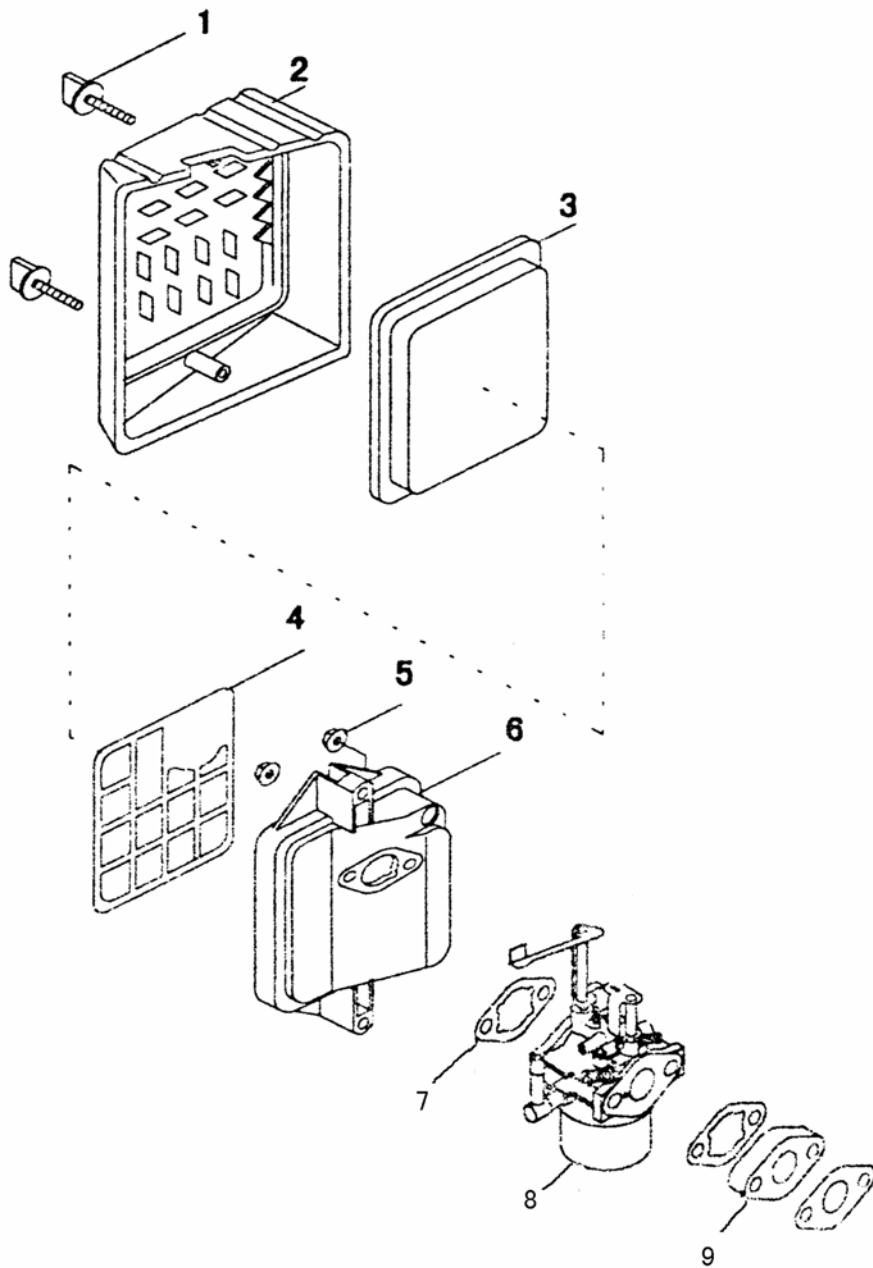


FIG E. AIR CLEANER

REF. NO.	PART NAME	Q'TY
1	Bolt	2
2	Filter cover	1
3	Air cleaner element	1
4	Hold rack	1
5	Net M6	2
6	Filter seat	1
7	Gasket	3
8	Carburetion assy.	1
9	Intake pipe	1

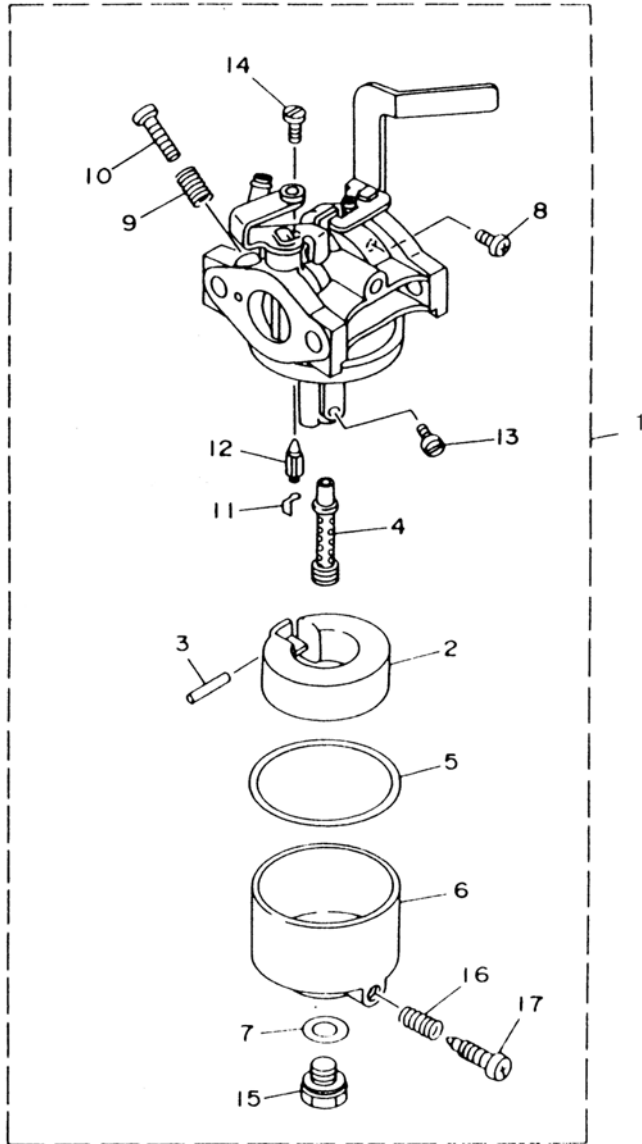
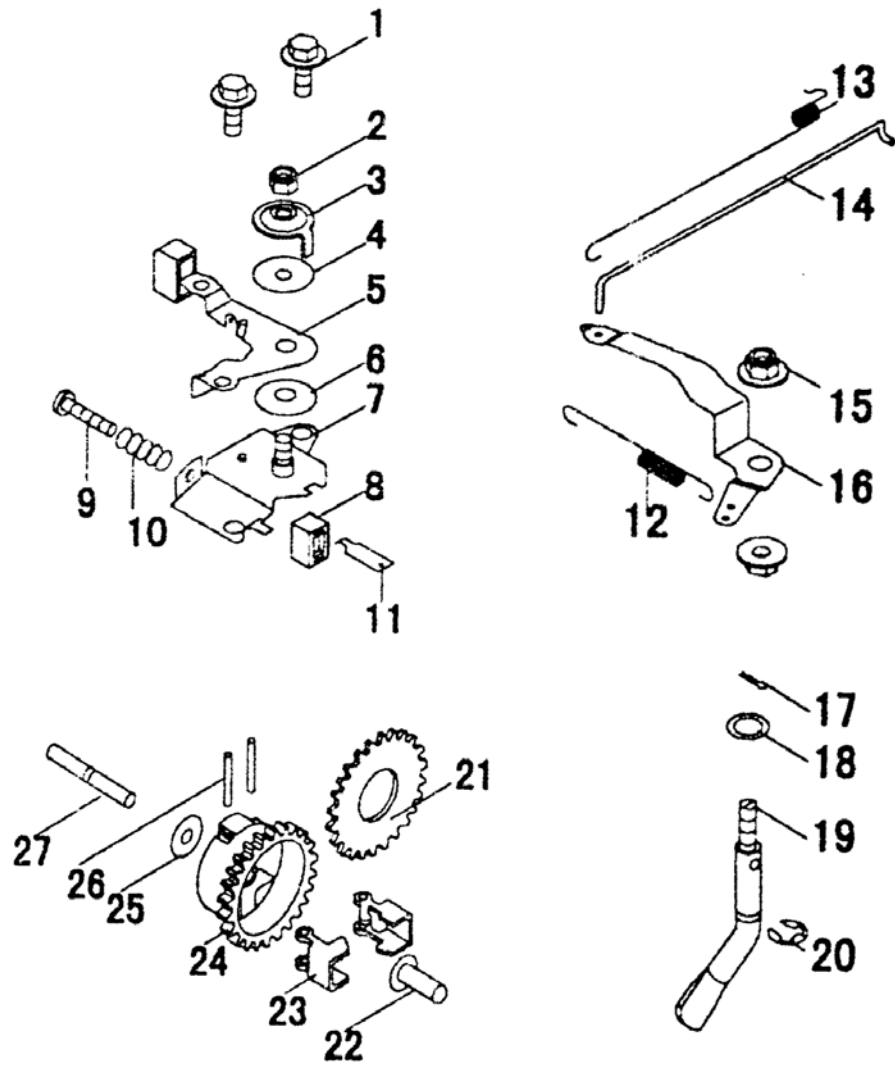


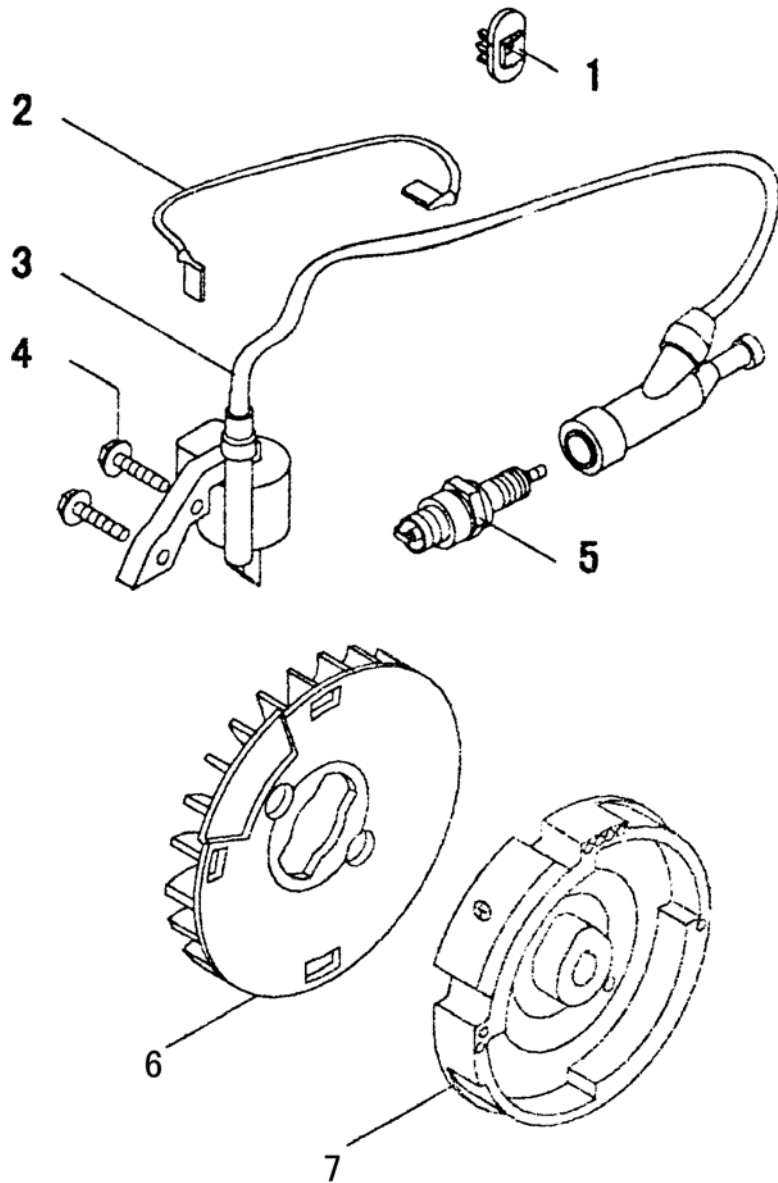
FIG F. CARBURETION

REF. NO.	PART NAME	Q'TY
1	Carburetion assy.	1
2	Float	1
3	Float pin	1
4	Main nozzle	1
5	Gasket	1
6	Float chamber body	1
7	Gasket	1
8	Bolt	1
9	Spring	1
10	Pilot screw	1
11	Bracket	1
12	Needle assembly	1
13	Main jet	1
14	Pilot jet	1
15	Bolt	1
16	Spring	1
17	Bolt	1

FIG G. GOVERNOR



REF. NO	PART NAME	Q'TY
1	Bolt	2
2	Nut M6	1
3	Platen	1
4	Spring washer	1
5	Handle	1
6	Washer	1
7	Shaft	1
8	Insulation frame	1
9	Bolt	1
10	Spring	1
11	socket	1
12	Spring	1
13	Spring	1
14	Link rod	1
15	Nut M6	2
16	Governor arm	1
17	Lock ring	1
18	Washer	1
19	Governor shaft	1
20	Lock ring	1
21	Gear	1
22	Governor slider	1
23	Flyweight	2
24	Adjust speed gear	1
25	Washer	1
26	Flyweight shaft	2
27	Adjust speed gear shaft	1



FIGH. IGNITION FLYWHEEL

REF. NO.	PART NAME	Q'TY
1	String frame	1
2	Stopping protective wires	1
3	Ignition coil assy.	1
4	Flange bolt	2
5	Spark plug	1
6	Fan	1
7	Flywheel	1

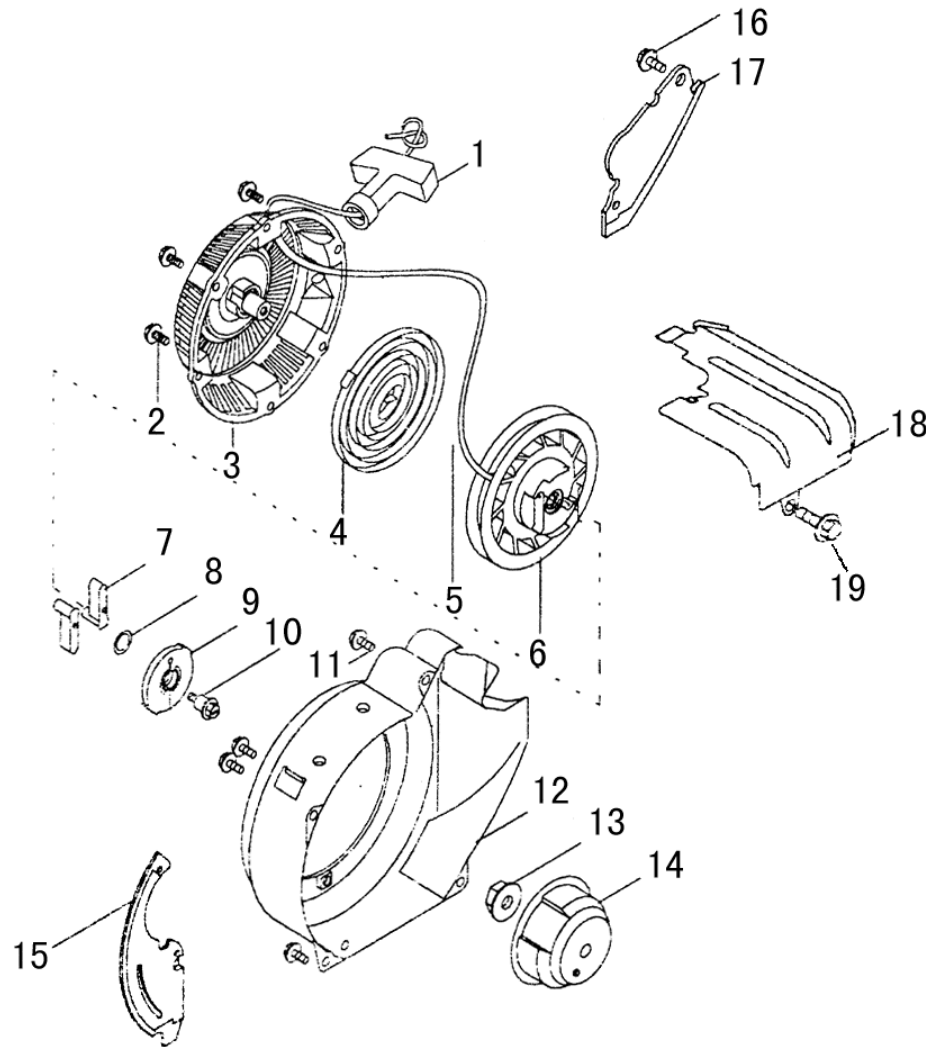


FIG I. RECOIL STARTER

REF. NO.	PART NAME	Q'TY
1	Handle	1
2	Bolt	3
3	Recoil starter case	1
4	Starter spring	1
5	Recoil starter rope	1
6	Drum sheave	1
7	Drive pawls	2
8	Clip	1
9	Drive plate	1
10	Pin	1
11	Bolt	4
12	Flywheel cover	1
13	Nut	1
14	Starter pulley	1
15	Behind cover	1
16	Bolt	1
17	Front cover	1
18	Air shroud	1
19	Bolt	1

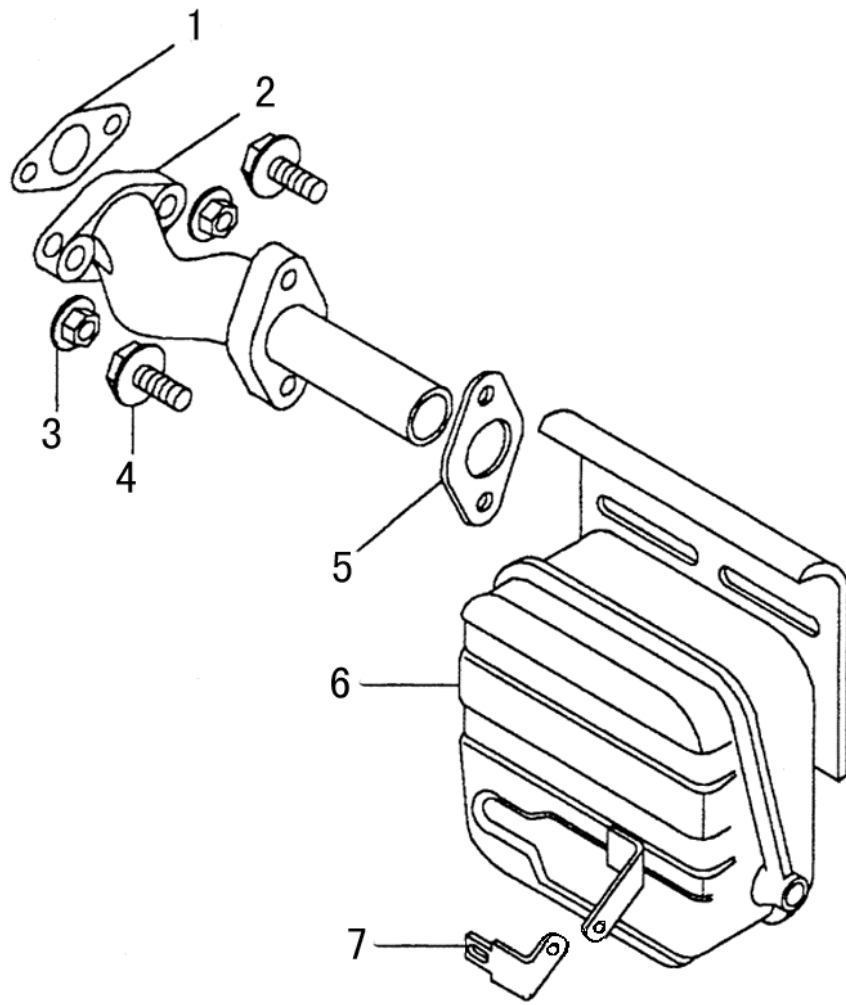


FIG J. MUFFLER

REF NO.	PART NAME	Q'TY
1	Gasket	1
2	Vent-pipe	1
3	Nut M6	2
4	Bolt	1
5	Gasket	1
6	Muffler	1
7	Muffler bracket	1

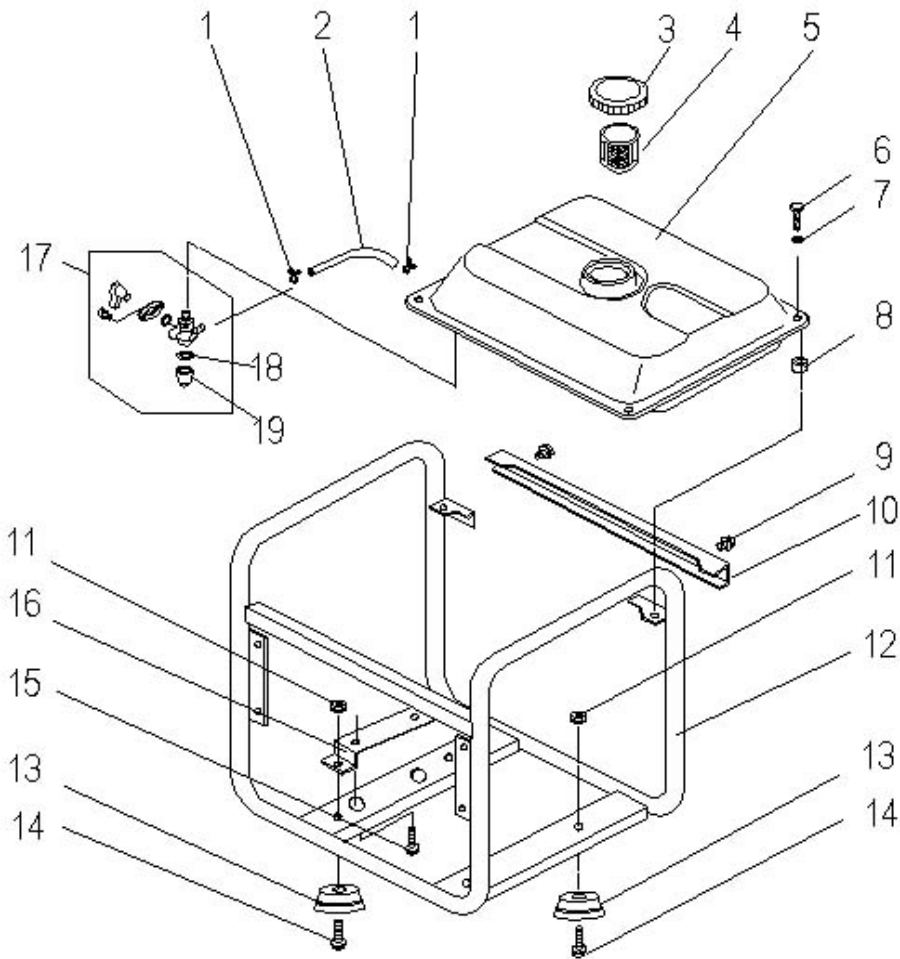
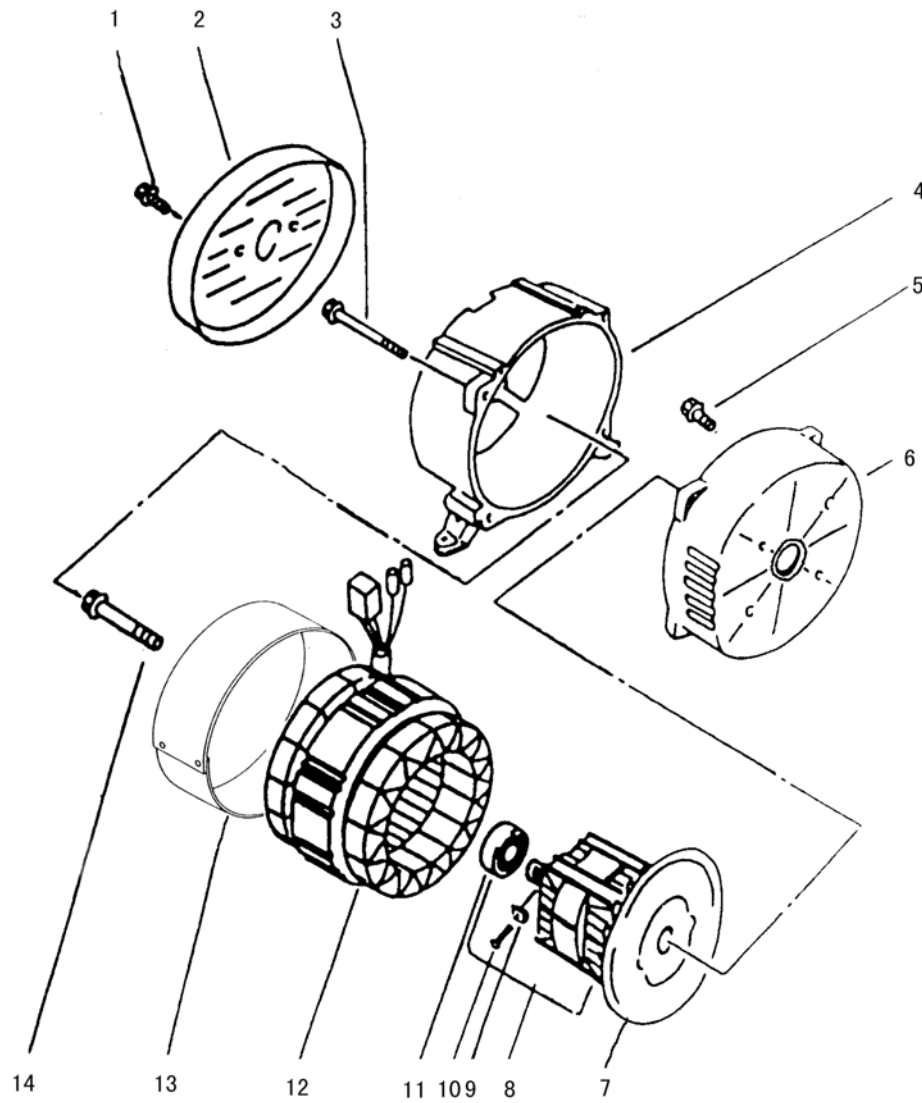


FIG K. FUEL TANK FRAME

REF. NO.	PART NAME	Q'TY
1	Clip	2
2	Fuel hose	1
3	Fuel cap	1
4	Fuel filter	1
5	Fuel tank	1
6	Bolt	4
7	Washer	4
8	Rubber	4
9	Bolt	2
10	Holder	1
11	Nut	4
12	Frame	1
13	Vibration absorber	4
14	Bolt M8×30	4
15	Bolt M8×20	2
16	holder	1
17	Fuel cock	1
18	Strainer	1
19	Fuel petcock cup	1

FIG L. GENERATOR

REF. NO.	PART NAME	Q'TY
1	Flange Bolt	2
2	End Cover	1
3	Flange Bolt	4
4	Rear Cover	1
5	Flange Bolt	4
6	Front Cover	1
7	Fan blade	1
8	Rotor Assy	1
9	Rectifier	1
10	Screw	1
11	Bearing	1
12	Stator Assy	1
13	Stator cover	1
14	Flange Bolt	1



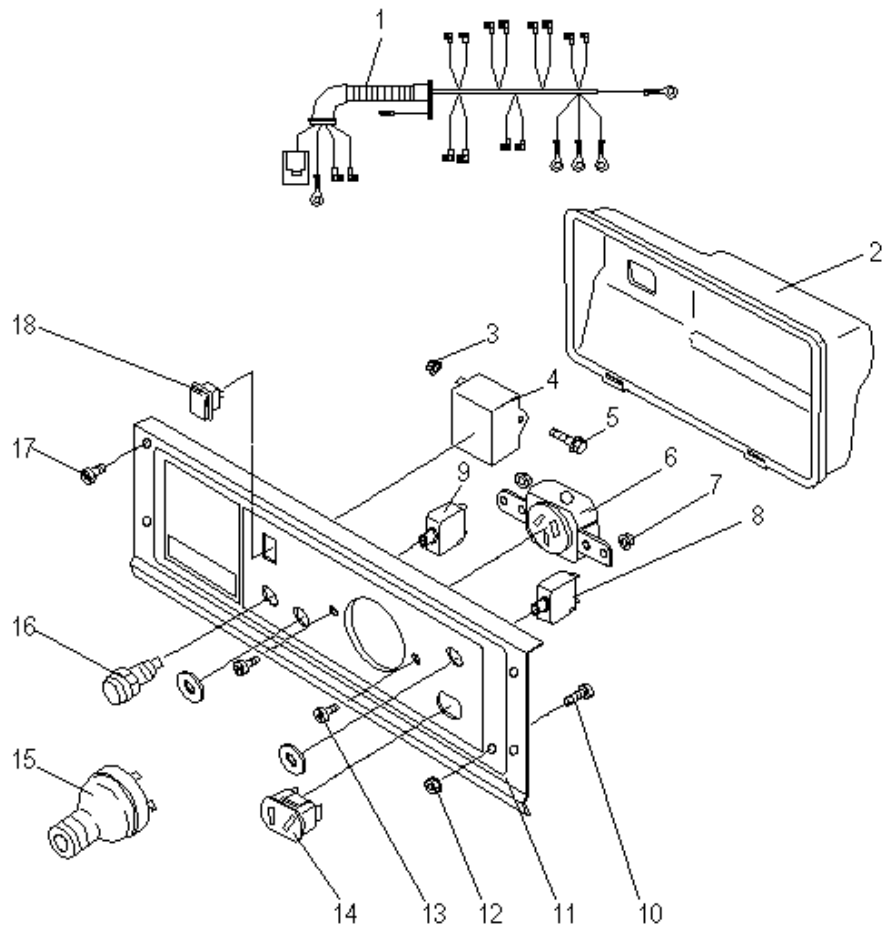


FIG M. CONTROL PANEL

REF. NO.	PART NAME	Q'TY
1	Wiring harness assy.	1
2	Back cover	1
3	Nut	1
4	Capacitor	1
5	Bolt	1
6	AC socket	1
7	Nut	2
8	DC circuit breaker	1
9	AC circuit breaker	1
10	Bolt	1
11	Control panel	1
12	Nut	2
13	Bolt	1
14	DC socket	1
15	AC plug	1
16	Pilot light	1
17	Bolt	4
18	Engine switch	1