

P3-POWER™

GS1001i

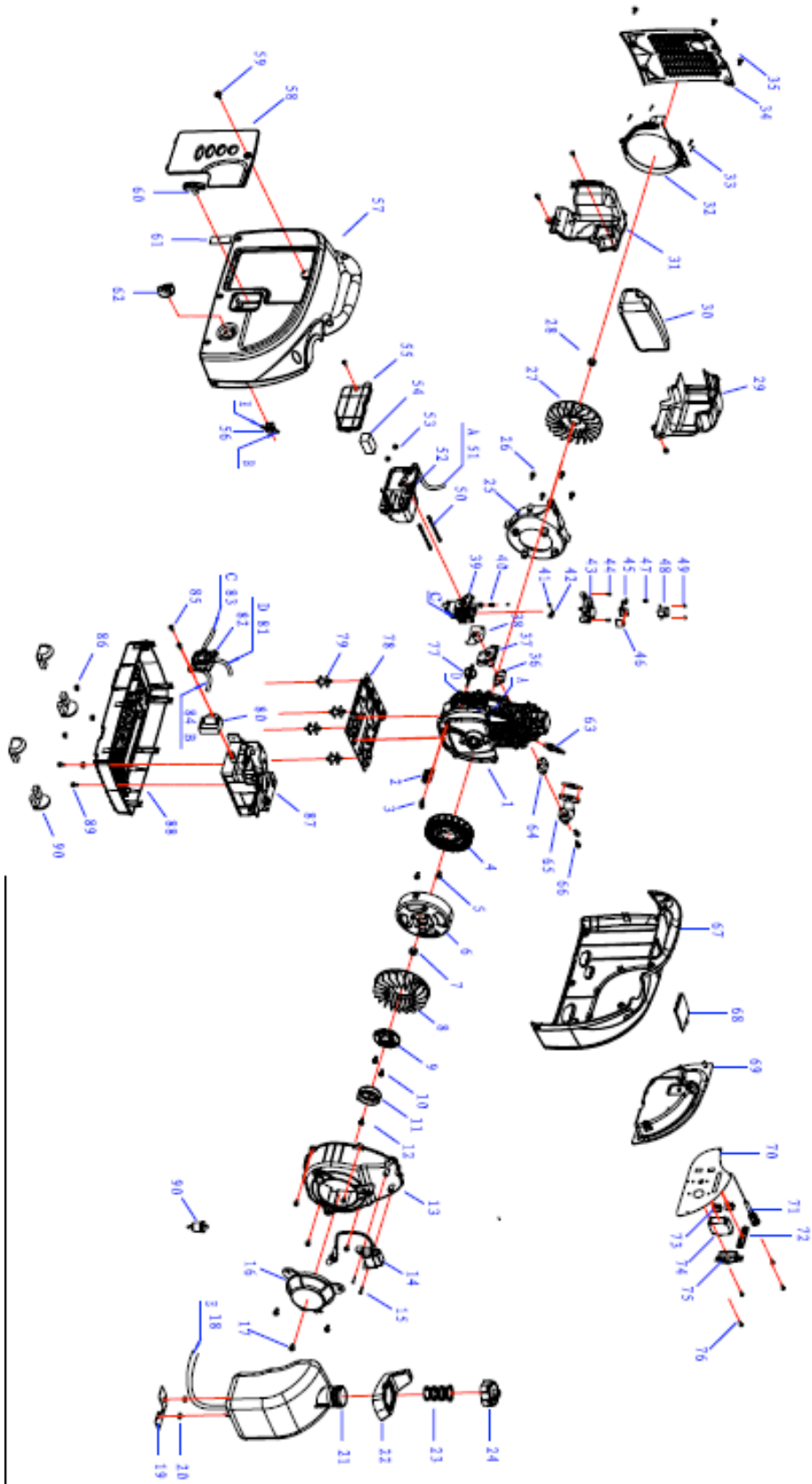
Parts Manual and Diagrams



Parts List

Ref #	Description	Ref #	Description
1	engine	47	M4 x 10 round head screw
2	Ignition timing senser	48	Step motor
3	M5 X 10 flange bolt	49	M3 x 8 round head screw
4	Stator assembly	50	Double head screw
5	M5 x 25 flange bolt	51	Air cleaner box
6	Flywheel assembly	52	Breath pipe
7	M10 x 1.25 nut	53	M5 nut
8	Fan blade	54	Air cleaner sponge
9	clutch joint sleeve	55	Air cleaner cover
10	M6 x 12 fangle bolt	56	Fuel valve
11	Starter cup	57	Left shroud
12	M6 x 16 fangle bolt	58	Access panel
13	Fan blade cover	59	M6 x 16 big head bolt
14	Inginition coil	60	Recoil starter handle
15	ST4.8 x 20 self-taping screw	61	Recoil starter sleeve
16	Recoil Starter	62	Fuel valve knob
17	M6 x 12 fangle bolt	63	Spark plug
18	Outlet pipe	64	Vent bent gasket
19	Fuel tank rubber gasket	65	Vent bent
20	fuel tank insulated sleeve	66	M6 x 20 bolt
21	Fuel tank	67	Right shroud
22	fuel tank sleeve	68	Top maintenance cover
23	Fuel filter	69	Control panel case
24	Fuel tank cap	70	Control panel
25	Fan housing	71	Choke knob assembly
26	M6 x 16 fangle bolt	72	Indicate light
27	Clutch fan	73	Rock switch
28	M10 x 1 nut	74	AC breaker
29	Left shroud	75	AC socket
30	Muffler	76	ST3.2 x 12 self taping screw
31	Right shroud	77	Dipstick
32	Fan cover	78	Engine holder
33	ST3.5 x 12 self taping screw	79	Absorption foot
34	Rear vent air panel	80	CDI box assembly
35	M5 x 16 round head screw	81	Inverter assembly
36	Carburetor gasket (SMALL)	82	Vaccum pipe
37	Rubber gasket	83	Vaccum pump
38	Carburetor gasket (BIG)	84	Engine Inlet pipe
39	Carburetor	85	Pump inlet pipe
40	Choke mount	86	M6 x 16 big head bolt
41	Throttle spring	87	M6 nut
42	Throttle adatper	88	Base
43	Step motor holder	89	M5 x 12 flange bolt
44	M4 x 10 round head screw	90	Outer foot Pads
45	Choke holder 1	91	Fuel filter
46	Choke holder 2		

Exploded Drawing





1-877-270-7772
6226 Danville Road
Mississauga, ON, L5T 2H7