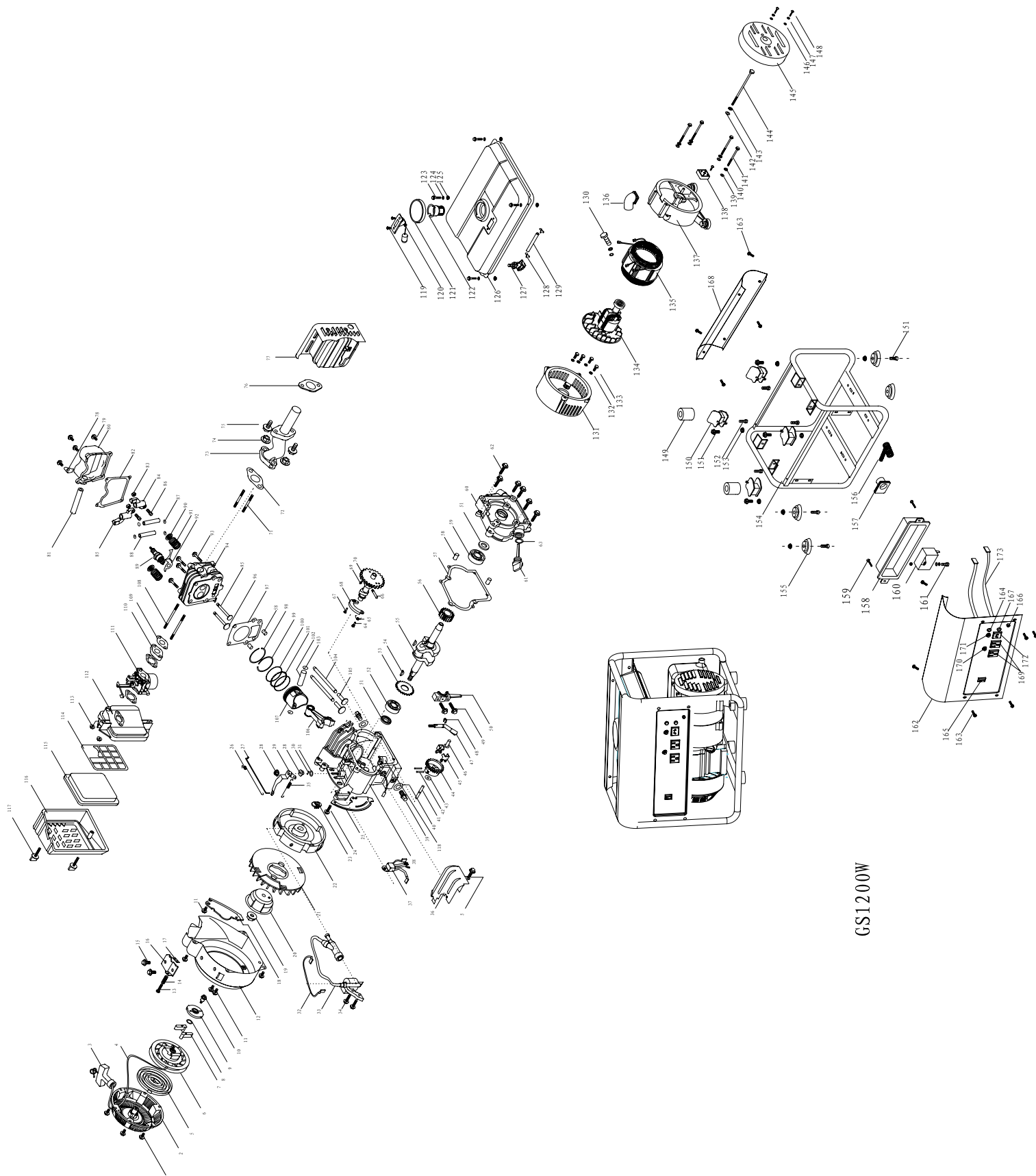


# GS1200W

## Parts Manual and Diagram





GS1200W

### GS1200W Spare Parts List

Code	Parts no.	Description
1	LY80-01019	Hexagon flange bolt
2	LY80-12211	Recoil starter case comp
3	LY80-12206	Recoil starter knob
4	LY80-12204	Recoil starter rope
5	LY80-12205	Recoil starter spring
6	LY80-12203	Drum sheave
7	LY80-12202	starter ratcher
8	LY80-12208	spring
9	LY80-12201	ratchet guide
10	LY80-12207	setting screw
11	LY80-01018	Hexagon flange bolt
12	LY80-12100	Shroud comp
13	LY80-08303	Crosshead screw
14	LY80.8-2	spring
15	LY80-01020	Bolt
16	LY80.8.1	Timing frame
17	LY80.8-1	Adjust board
18	LY80-10201	front cover
19	LY80-01025	Nut
20	LY80-12001	Starter pulley
21	LY80-10001	Fan
22	LY80-10100	Flywheel
23	LY80-09304	route frame
24	GB5787-86-625	HEXAGON FLANGE BELT M6×25
25	LY80-10002	back cover
26	LY80-08203	gun spring
27	LY80-08209	gun Connecting rod
28	LY80-08208	M6 Nut
29	LY80-08201	timing rocker
30	LY80-08207	Governor hold clip
31	LY80-08206	Flat gasket
32	LY80-09300	flameout protector
33	LY80-09100	ignition
34	LY80-01017	Bolt
35	LY80-08204	spring,pilot adjusting
36	LY80-10003	cover
37	LY80-90500	Pilotlamp controller
38	LY80-02100	Crankcase
39	LY80-02005	Governor plug plot
40	LY80-01013	Flat gasket
41	LY80-08103	Governor shaft
42	LY80-08104	Governor weight pin
43	LY80-08105	Governor shaft washer
44	LY80-08106	Governor weight holder
45	LY80-08101	Governor weight
46	LY80-08102	Governor slider
47	LY80-08202	Governor arm shaft
48	LY80-08207	Governor hold clip
49	LY80-04113	Connecting rod screw
50	LY80-04112	Connecting rod cover
51	LY80-02004	Oil seal

### GS1200W Spare Parts List

Code	Parts no.	Description
52	LY80-02002	Bearing 6203
53	LY80-08001	governor driving gear
54	LY80-01027	Key
55	LY80-04001	Crankshaft
56	LY80-05001	timing gear
57	LY80-01007	Gasket
58	LY80-02007	setting pin
59	LY80-02003	Bearing 6303
60	LY80-02001	crankcase cover
61	LY80-02006	Drain plug
62	LY80-01015	Hexagon flange bolt
63	LY80-02008	airproof circle
64	LY80-05105	pin A
65	LY80-05107	reed
66	LY80-05102	sleek pin
67	LY80-05106	pin B
68	LY80-05104	slip loaf
69	LY80-05103	Governor hold clip
70	LY80-05101	Camshaft assembly
71	LY80-01021	Stud bolt
72	LY80-01010	Exhaust Pipe Gasket A
73	LY80-11002	EXHAUST PIPE
74	LY80-01024	Nut
75	LY80-11005	Hexagon flange bolt M6×6
76	LY80-11003A	Exhaust Pipe Gasket A
77	LY80-11100	Muffler
78	LY80-03003	cover
79	LY80-01016	Bolt
80	LY80-03200	Head cover comp
81	LY80-03001	Breather hose
82	LY80-01008	Head cover packing
83	LY80-05302	Nut
84	LY80-05320	exhaust rocker
85	LY80-05310	intake rocker
86	LY80-05301	bolt
87	LY80-05305	ring
88	LY80-05304	rocker shaft
89	LY80-09400	Spark plug
90	LY80-05006	spring base
91	LY80-05005	valve spring
92	LY80-08307	compressing cover
93	LY80-01014	Flange bolt
94	LY80-03100	Cylinder
95	LY80-05003	Exhaust valve
96	LY80-05004	Intake valve
97	LY80-01009	Head cover packing
98	LY80-04123	First ring set
99	LY80-04124	Second ring set
100	LY80-04121	guide course
101	LY80-04122	rise spring
102	LY80-04102	Piston pin
103	LY80-04103	Piston pin clip
104	LY80-05200	Push rod
105	LY80-05002	valve lifter

### GS1200W Spare Parts List

Code	Parts no.	Description
106	LY80-04111	connecting rod assy
107	LY80-04101	piston
108	LY80-01022	Stud bolt
109	LY80-01011	insulator packing
110	LY80-01012	Carburetor insulator
111	LY80-06000	Carburetor
112	LY80-07101	Air Fiter Base
113	LY80-01023	Nut
114	LY80-07002	Helding bracket
115	LY80-07003	Air filter Sponge
116	LY80-07001	Air filter cap
117	LY80-07200	manus bolt assembly
118	LY80-09502	Oil level switch assy
119	GB818-85	bolt
120	F2020200	FUEL METER
121	F1020200	FUEL TANK CAP
122	F1020300	FUEL TANK FILTER
123	GB5787	HEXAGON FLANGE BELT M6×16
124	GB95-85	GASKET 6
125	GB6187.1-2000	FLANGE LOCKED NUT M6
126	F2020100	FUEL TANK
127	F2020300	FUEL SWITCH
128	LY80-13402	FUEL PIPE HOOP
129	LY80-13404	fuel PIPE
130	GB5783-86	HEXAGON FLANGE BELT M6×12
131	F2050001	FRONT COVER
132	CB862.1	FASTEN GASKET
133	GB5783-86	BELT M8×25
134	WD160-1.2-001	ROTOR ASSY
135	WD160-1.2-002	STATOR ASSY
136	F2010002	MAGNETO WIRE PROTECT COVER
137	F2050002	REAR COVER
138	KBPC2506	Rectifier comop
139	GB95-85	GASKET 6
140	GB93-87	SPRING GASKET 6
141	GB5782-86	FLANGE BOLTM6×85
142	GB95-85	GASKET 8
143	GB93-87	SPRING GASKET 8
144	GB5782-86	HEXAGON FLANGE BELT
145	F2050003	MAGNETO COVER
146	GB95-85	GASKET 5
147	GB93-87	SPRING GASKET 5
148	GB29.2-88	BOLT M5X12
149	F2030001A、F2030002	ANTI-VIRBRATION GASKET
150	F2030200A	Left and right shockproof mounting feet (4)
151	GB5783-86	HEXAGON FLANGE BELT
152	GB6187.1-2000	FLANGE LOCKED NUT M8
153	GB5783-86	HEXAGON FLANGE BELT
154	F2030100	FRAME
155	WDF1200C-2	Pad
156	F2010020	□6、□20 Ripple Pipe
157	F2010003	Outlet line jacket
158	WDF1200C.2-1	ELECTRIC APPLIANCE BOX
159	GB5787-86	BOLT M4X10

**GS1200W Spare Parts List**

<b>Code</b>	<b>Parts no.</b>	<b>Description</b>
160	CBB61	CAPACITOR
161	GB818-85	BOLT M5X20
162	F2010004	PANEL
163	GB5787-86	BOLT M6X12
164	WDF1200C.2.2(3)	PILOTLAMP
165	KDC1	ENGINE SWITCH
166	GB5780-86	CONNECT THE LINE PILLAR
167	WDF1200C.2(5).1	OIL LAMP
168	F2010005	MOPBOARD
169	CZ--03	AC SOCKET
170	74series	AC RESET
171	KGZ-01	DC RESET
172	CZ-01	DC SOCKET
173	F2010006	FLEX TUBE



**1-877-270-7772**  
**6226 Danville Road**  
**Mississauga, ON, L5T 2H7**