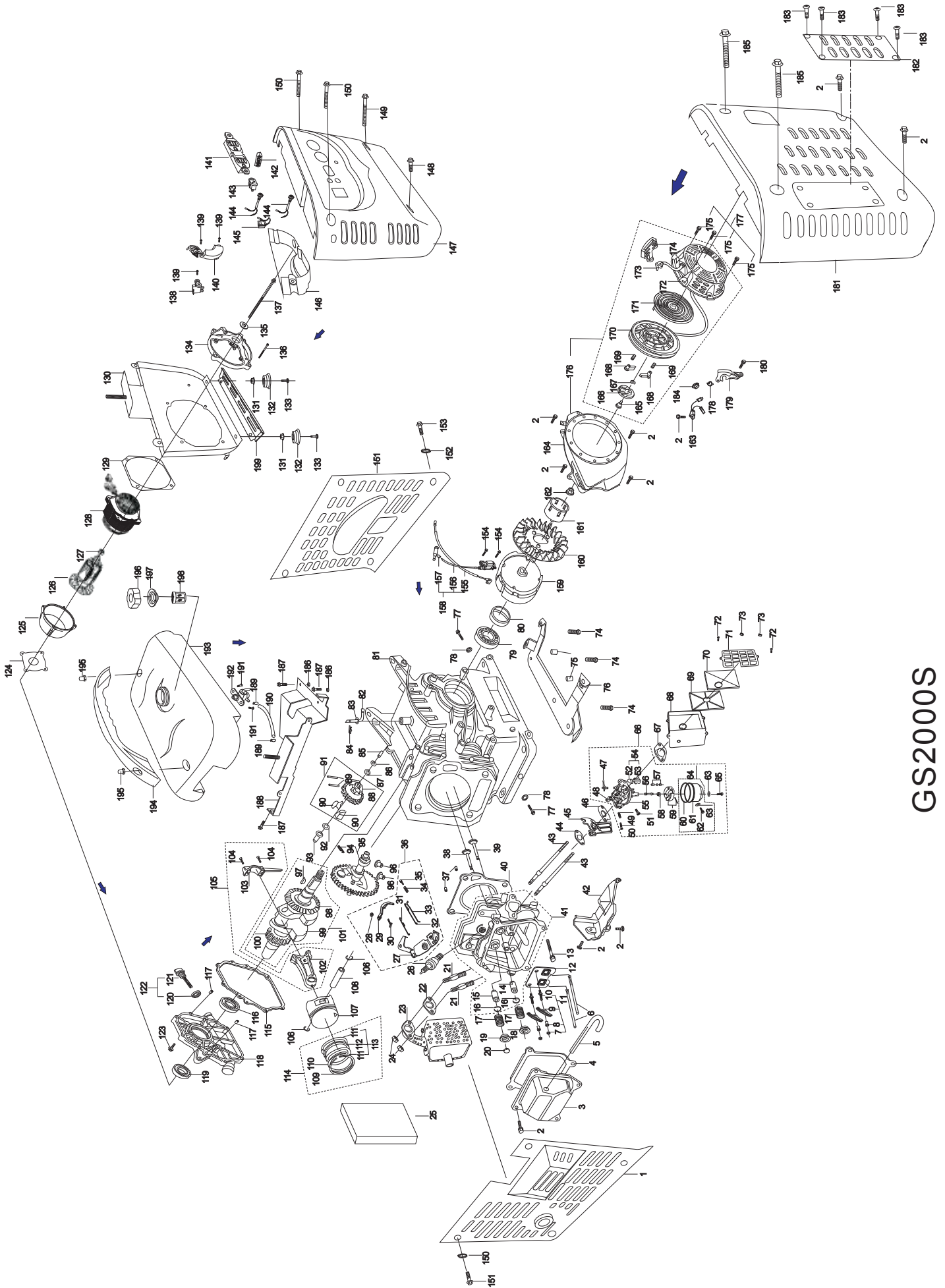


# GS2000S

## Parts Manual and Diagram





GS2000S

## GS2000S SPARE PARTS LIST

ITEM	PARTS NO.	Description	QUANTITY
1	41221	Muffler protect pane	1
2	GB5787-86	Bolt M6×12	13
3	12310/168F	Cylinder head cover Assy	1
4	12312/168F	Gasket, cylinder head cover	1
5	20651/168F	Air duck	1
6	14250/1P64FV	Pusher	2
7	14416/168F	Lock nut	2
8	14413/168F	Sleeve	2
9	14411/168F	Valve rocker	2
10	14415/168F	Adjusting bolt for valve gap	2
11	14410/168F	Valve rocker assy	2
12	14261/1P64FV	Pusher guide	1
13	12256	Bolt M8×55	4
14	12214/168F	Intake valve guide	1
15	12215/168F	Exhaust valve guide	1
16	12219/168F	Circip	2
17	14755/168F	Valve spring	2
18	14751/168F	Spring seat, intake valve	1
19	14757/168F	Spring seat, exhaust valve	1
20	14758/168F	Cap	1
21	12253/168F	Stud M8×34	2
22	18300	Exhaust gasket	1
23	18000	Muffler	1
24	GB41-86	Nut M8	2
25	18625	Heat insulation	1
26	34200/168F	Spark plug 6RTC	1
27	26420	Support panel assy	1
28	GB6177-86	Nut M6	1
29	26331	Regulating	1
30	26362	Lock bolt	1
31	26363	Back spring	1
32	26364	Fine regulating	1
33	26341	Pulling rod	1
34	26415	Regulating spring	1
35	26362	Lock bolt	1
36	26000	Regulating control system	1
37	12218/168F	Set pin $\phi 10 \times 16$	2
38	14721	Exhaust valve	1
39	14711	Intake valve	1
40	12220	Gasket, cylinder head	1
41	12210	Cylinder head Assy	1
42	19721	Lead wind cover	1
43	12252/168F	Stud M6×113	2
44	12254/168F	Inlet gasket	1
45	16141	Connecting block	1
46	16142/168F	Carburetor gasket	1
47	16148/168F	Choke switch	1
48	16280	Throttle unit	1
49	16422/168F	Spring, mixture adjustment screw	1
50	16425/168F	Mixture adjustment screw	1
51	16421/168F	Idle adjustment screw	1

## GS2000S SPARE PARTS LIST

ITEM	PARTS NO.	Description	QUANTITY
52	16332/168F	Choke stem	1
53	16331/168F	Choke	1
54	16330/168F	Choke unit	1
55	16250	Mixture chamber body	1
56	16251	Main nozzle	1
57	16240/168F	Float needle	1
58	16254	Main jet	1
59	16230/168F	Float	1
60	16219/168F	Float chamber gasket	1
61	16211/168F	Float chamber	1
62	16215/168F	Float chamber drain Screw	1
63	16216/168F	Washer	2
64	16210/168F	Float chamber	1
65	16213/168F	Screw	1
66	16100	Carburetor Assy	1
67	17330	Air cleaner gasket	1
68	17131	Air cleaner housing	1
69	17132	Filter element	1
70	17183	Filter Support	1
71	17111	Air cleaner cover	1
72	GB818-85	Bolt	2
73	GB6177-86	Nut M6	2
74	GB5787-86	Bolt M6×30	3
75	GB119-86	set pin $\phi 8.7 \times \phi 6.2 \times 19$	2
76	41162	support panel	1
77	11212/168F	Drain plug	2
78	11213/168F	Washer	2
79	GB276-89	Bearing 62/22	1
80	13190	Oil seal, crankshaft	1
81	11100	Crankcase	1
82	26311/168F	Regulating sway bar	1
83	26329/168F	Washer	1
84	26321/168F	Split pin	1
85	25151/168F	Regulating shaft	1
86	25164/168F	Snap ring	1
87	25165/168F	Washer, driven gear	1
88	25121/168F	Driven gear, regulator	1
89	25163/168F	Pin	2
90	25141/168F	Flying block	2
91	25120/168F	Driven gear, regulator assy	1
92	25132/168F	Washer	1
93	25131/168F	Sliding sleeve	1
94	14146/168F	Extension spring	1
95	14100	Camshaft Assy	1
96	14455/168F	Tappet	2
97	13118/168F	Woodruff key	1
98	25111	Drive gear	
99	13111	Crankshaft	1
100	14211	Timing driving gear	1
101	13110	Crankshaft assy	1
102	13131	Shank	1

## GS2000S SPARE PARTS LIST

ITEM	PARTS NO.	Description	QUANTITY
103	13132	Connecting rod cover	1
104	13133/1P64FV	Bolt	2
105	13130	Connecting rod	1
106	13222/1P64FV	Piston pin circlip	2
107	13211	Piston	1
108	13221/1P64FV	Piston pin	1
109	13311	Piston ring ( I )	1
110	13312	Piston ring (II )	1
111	13322	Side rail	2
112	13321	Expander	1
113	13320	Scraper ring set	1
114	13300	Piston ring set	1
115	11119	Gasket, crankcase	1
116	GB276-89	Bearing 62/22	1
117	11118/168F	Set pin	2
118	11311	Crankcase cover	1
119	13180	Oil seal, crankshaft	1
120	15612/168F	Seal	1
121	15611/168F	Dipstick	1
122	15610/168F	Dipstick with seal	1
123	GB5787-86	Bolt M6×28	7
124	31134	washer	1
125	31714	Right cover, generator	1
126	31715	Rotor Assy	1
127	GB276-89	Bearing 6204-2ZN	1
128	31710	Stator Assy	1
129	31134	washer	1
130	41160	Generator support panel	1
131	GB6177-86	Nut M6	4
132	42130	Bottom rubber	4
133	GB5787-86	Bolt M6×25	4
134	31411	Stay, generator	1
135	GB95-85	washer 6mm	1
136	31931	Bolt, M10×26	4
137	31933	Bolt, M10×265	1
138	31370	Brush Assy	1
139	31997	Bolt	3
140	31600	Voltage regulator	1
141	35510	Consent (AC)	1
142	32520	Earth terminal set	1
143	35520	Consent (DC)	1
144	31710	Current protector	2
145	35410	Ignition switch	1
146	37321	Control panel case	1
147	37310	Control panel	1
148	GB5787-86	BoltM6×16	1
149	GB5787-86	BoltM6×70	1
150	GB5787-86	BoltM6×35	2
151	41222	Oil protect pane	1
152	GB93-86	Spring ring	8
153	GB5787-88	Bolt M6×12	8

## GS2000S SPARE PARTS LIST

ITEM	PARTS NO.	Description	QUANTITY
154	GB5787-86	Screw M6×25	2
155	34410/168F	Engine stop cable	1
156	34510/168F	Ignition coil	1
157	34310/168F	Spark plug cap	1
158	34500/168F	Ignition coil assy	1
159	27500	Flywheel	1
160	19722	Flywheel fan	1
161	27371/168F	Starting flange	1
162	27515/168F	Nut M14×1.5	1
163	37850/168F	Diode	1
164	19710	Fan hood assy	1
165	27315/168F	Set screw	1
166	27341/168F	Spring lid	1
167	27311/168F	Friction spring	1
168	27331/168F	Ratchet	2
169	27312/168F	Ratchet spring	2
170	27351/168F	Starter rolls	1
171	27319/168F	Spiral spring	1
172	27380/168F	Casing	1
173	27313/168F	Rope	1
174	27361/168F	Pulling handle	1
175	GB5787-86	Bolt M6×8	3
176	27300/168F	Recoil starter	1
177	27100	Recoil starter assy	1
178	32211/168F	Plastic clip	1
179	19810	Crankcase side plate assy	1
180	GB5787-86	Bolt M6×20	1
181	17101	Air cleaner side pane assy	1
182	17111	Air cleaner cover panel	1
183	GB818-85	Pan screw M3×6	4
184	19715/168F	Grommet	1
185	GB5787-86	Bolt M6×40	2
186	GB6177-86	Nut M6	2
187	GB5787-86	Bolt M6×30	3
188	41161	Fuel tank support panel	1
189	16937	Pipe clamp	2
190	16931	Outlet pipe	1
191	GB818-85	Pan screw M5×12	2
192	16930	fuel cock	1
193	16610	Fuel tank	1
194	41661	Handle	1
195	GB923-8	Nut M8	2
196	16511	Fuel filler cap	1
197	16521	Paking ring	1
198	16916	Filler cup	1
199	41151	Bottom plate	1



**1-877-270-7772**  
**6226 Danville Road**  
**Mississauga, ON, L5T 2H7**