

PARTS CATALOGUE

GS3000W

GOSS INDUSTRIES INC.
6226 Danville Road, Mississauga, Ontario L5T-2H7
Phone: 905-795-9830 x 226 fax: 905-795-9832
email: info@gossindustries.com
www.p3power.ca

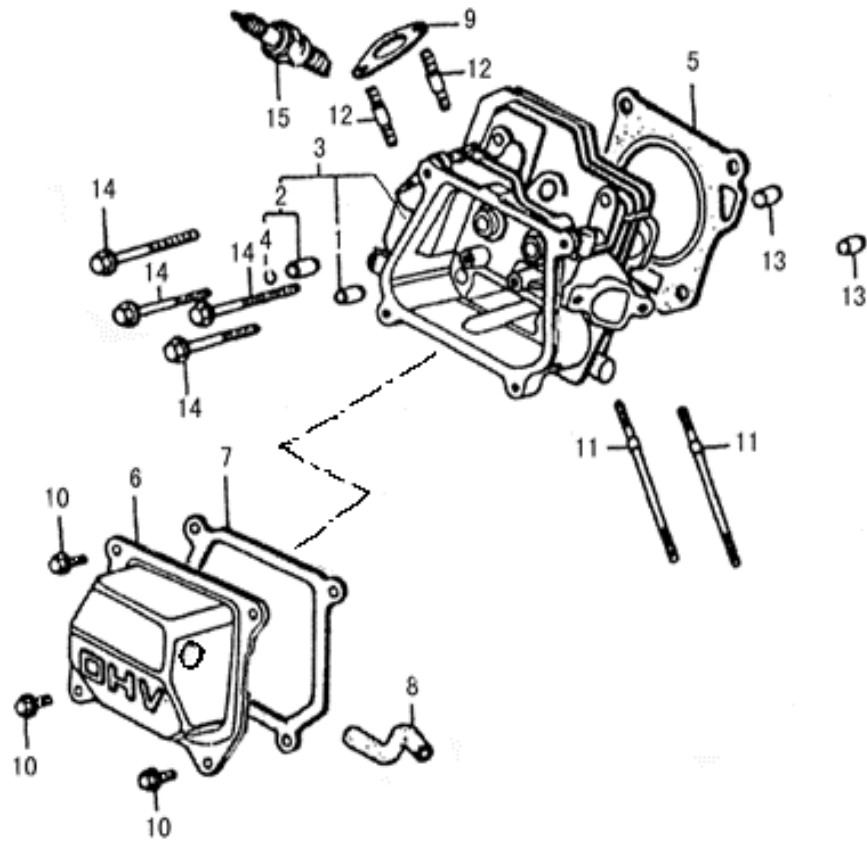


FIG.A CYLINDER HEAD

REF. NO.	DESCRIPTION	Q'TY
1	In valve guide	1
2	Ex valve guide	1
3	Cylinder Head	1
4	Valve guide clip	1
5	Cylinder head gasket	1
6	Head Cover,	1
7	Head Cover gasket	1
8	Recoil pipe	1
9	Gasket	1
10	Flange Bolt M6x12	4
11	Bolt M6x94	2
12	Bolt M8x32	2
13	Dowel pin 10x16	2
14	Flange Bolt M8x60	2
15	Spark Plug	1

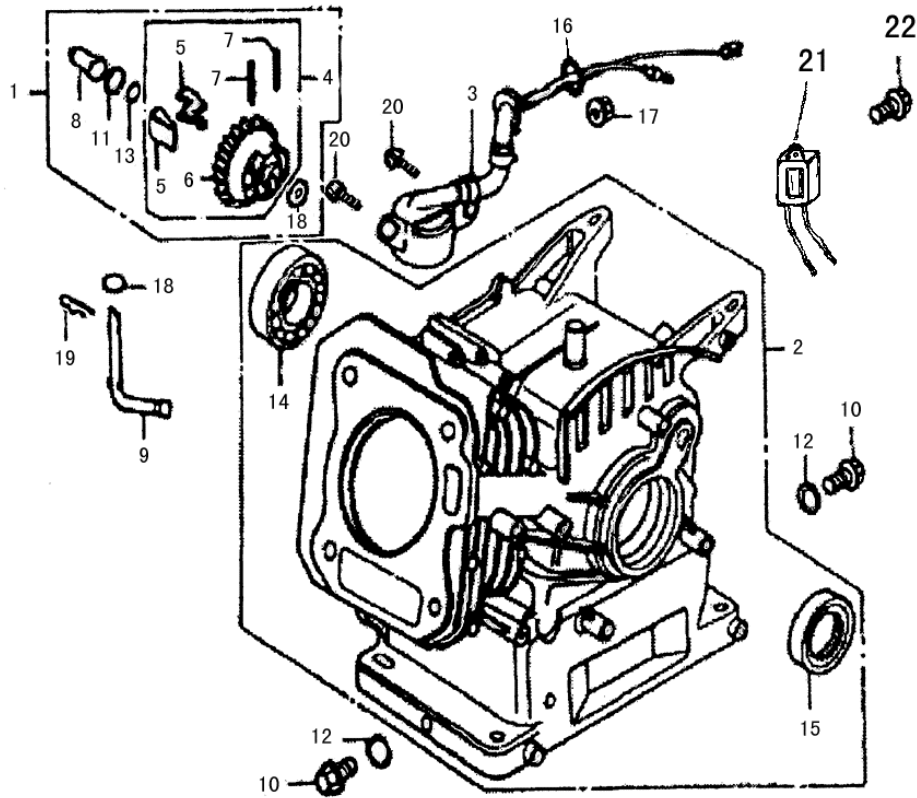


FIG.B CRANKCASE ASSY

REF. NO.	DESCRIPTION	Q'TY
1	Governor kit	1
2	Crankcase assy	1
	Crankcase assy	1
3	Oil sensor	1
4	Governor assy	1
5	Flyweight	2
6	Adjust speed gear	1
7	Flyweight shaft	2
8	Adjust speed gear shaft	1
9	Governor shaft	1
10	Drain bolt	2
11	Washer	1
12	Washer	2
13	Governor holder clip	1
14	Bear (6205)	1
15	Oil seal	1
16	O ring 25×41.25×6	1
17	Nut (M10)	1
18	Washer 6	2
19	Lock pin 8	1
20	Bolt M6×12	2
21	Oil warning unit	1
22	Bolt M6×12	1

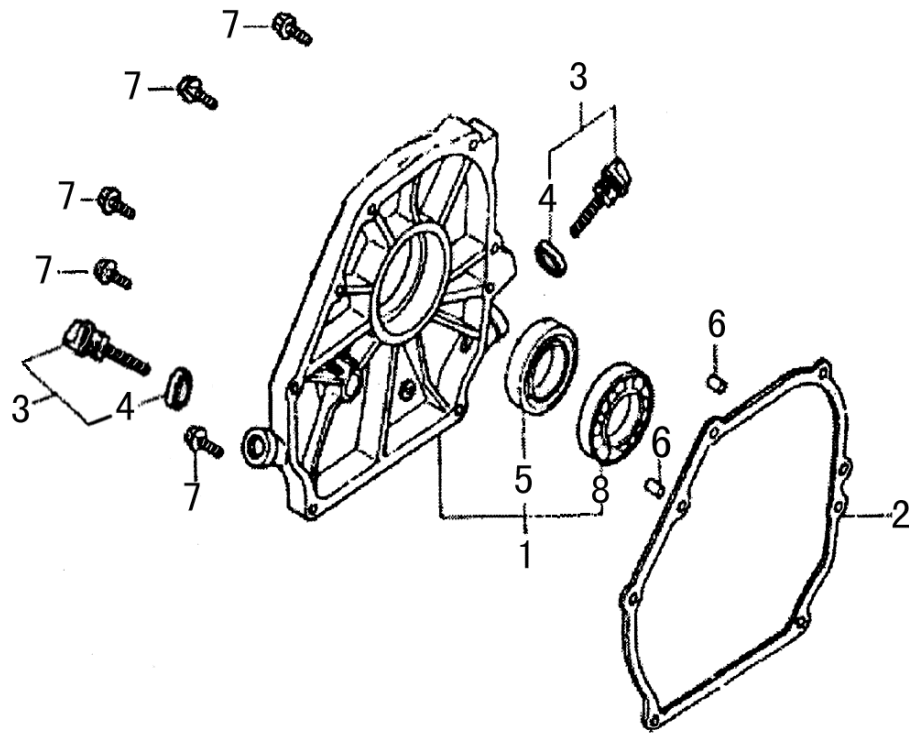


FIG.C CRANKCASE COVER

REF. NO.	DESCRIPTION	Q'TY
1	Crankcase cover assy	1
2	Case cover gasket	1
3	Oil level cap assy.	2
4	O ring	2
5	Oil seal 25×41.25×6	1
6	Dowel pin 8×14	2
7	Bolt M8×32	6
8	Bear (6205)	1

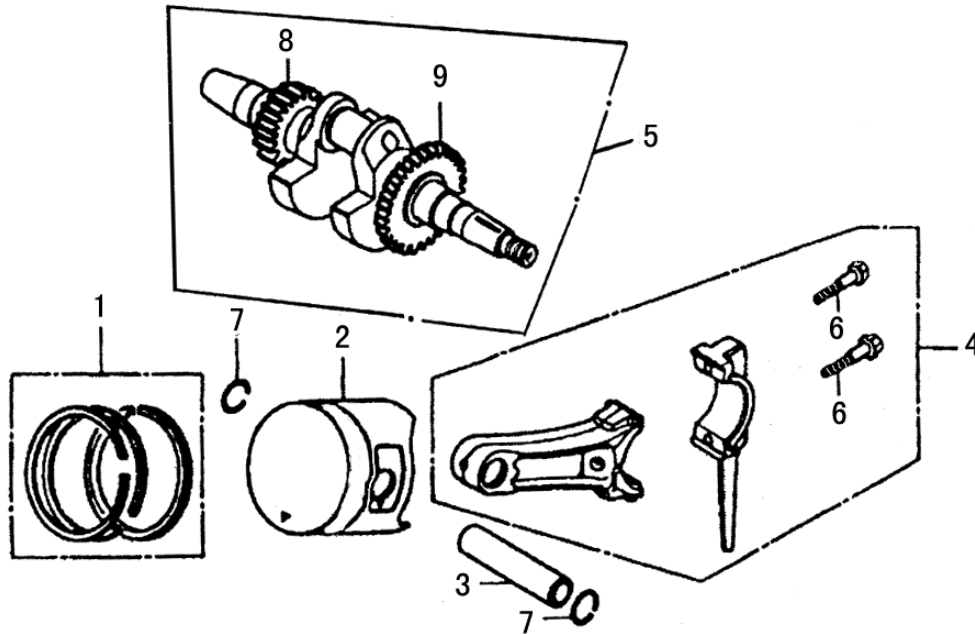
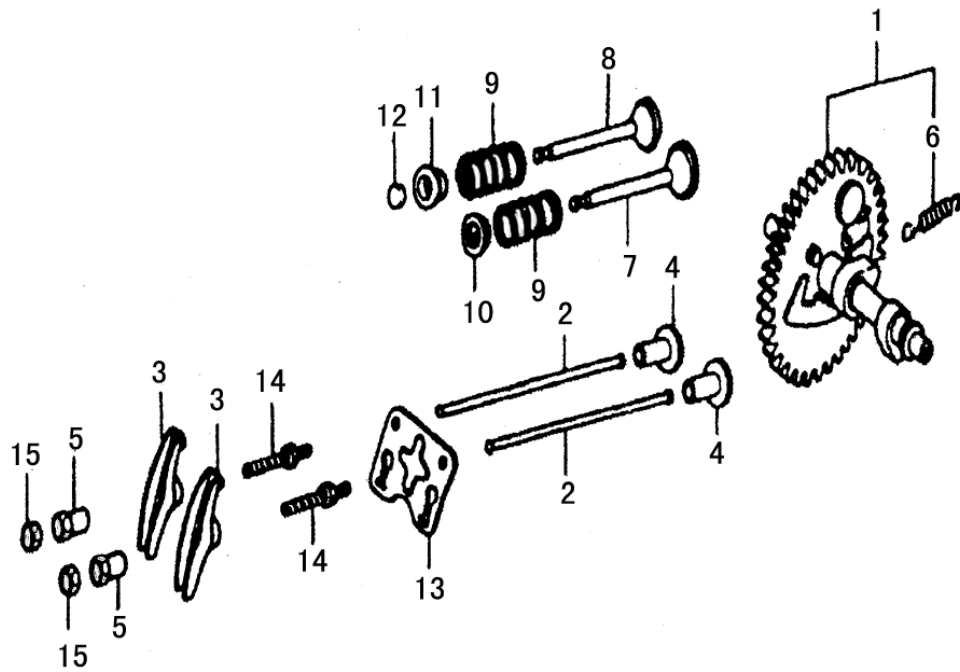


FIG.D CRANKSHAFT PISTON

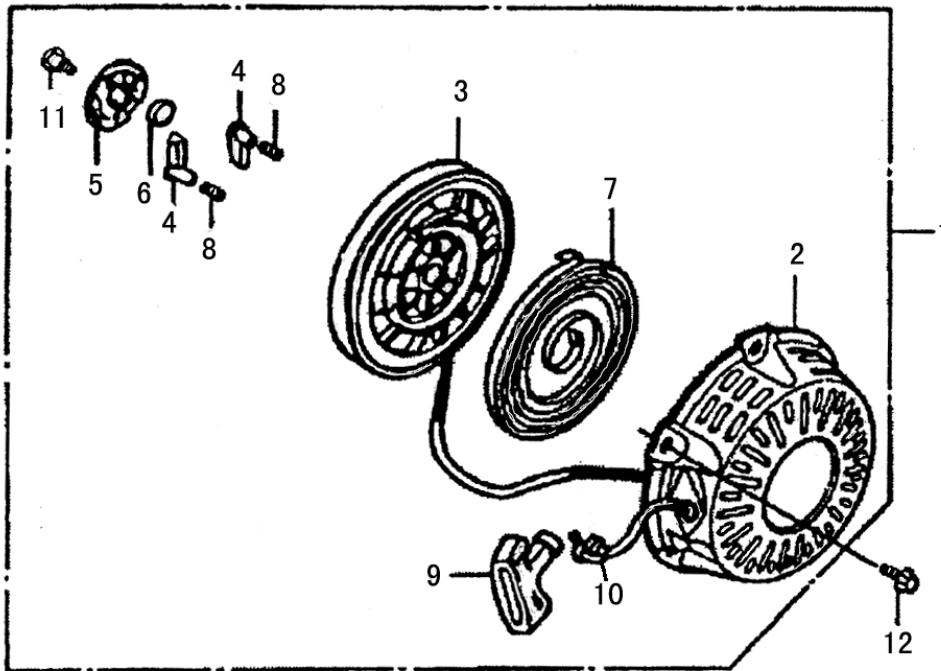
REF. NO.	DESCRIPTION	Q'TY
1	Piston ring	1
2	Piston	1
3	Piston pin	1
4	Connecting rod	1
5	Crankshaft assy	1
6	Connecting rod bolt	2
7	Piston pin clip	2
8	Gear	1
9	Gear	1



FIGE CAMSHAFT

REF. NO.	DESCRIPTION	Q'TY
1	Camshaft assy	1
1	Camshaft assy	1
2	Push rod	2
3	Valve rocker	2
4	Valve lifter	2
4	Valve lifter	2
5	Rocker pivot	2
6	Weight return spring	1
7	Intake valve	1
8	Exhaust valve	1
9	Valve spring	2
10	Intake valve spring seat	1
11	Exhaust valve spring seat	1
12	Valve rotator	1
13	Rocker seat	1
14	Adjusters screw	2
15	Adjusting nut	2

FIG.F RECOIL STARTER



REF. NO.	DESCRIPTION	Q'TY
1	Recoil starter	1
2	Recoil starter case	1
3	Drum sheave	1
4	Drive pawls	2
5	Drive pawls guide	1
6	Clip	1
7	Starter spring	1
8	Return spring	2
9	Handle	1
10	Recoil starter rope	1
11	Screw	1
12	Flange bolt M6×6	3

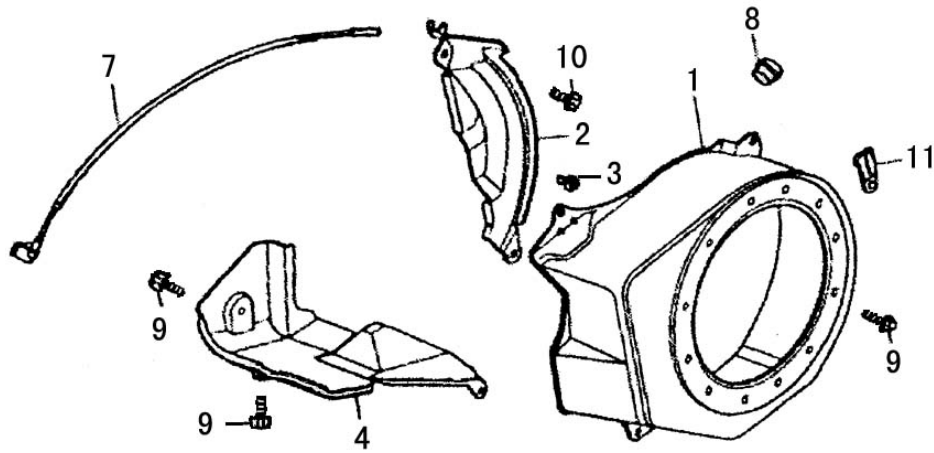


FIG.G FLYWHEELCOVER

REF. NO.	DESCRIPTION	Q'TY
1	Flywheel cover	1
2	Side plate	1
3	Cord clamp	1
4	Air shroud	1
7	Cord	1
8	Drain hole grommet	1
9	Bolt M6×12	6
10	Bolt M6×20	1
11	Wire clip	1

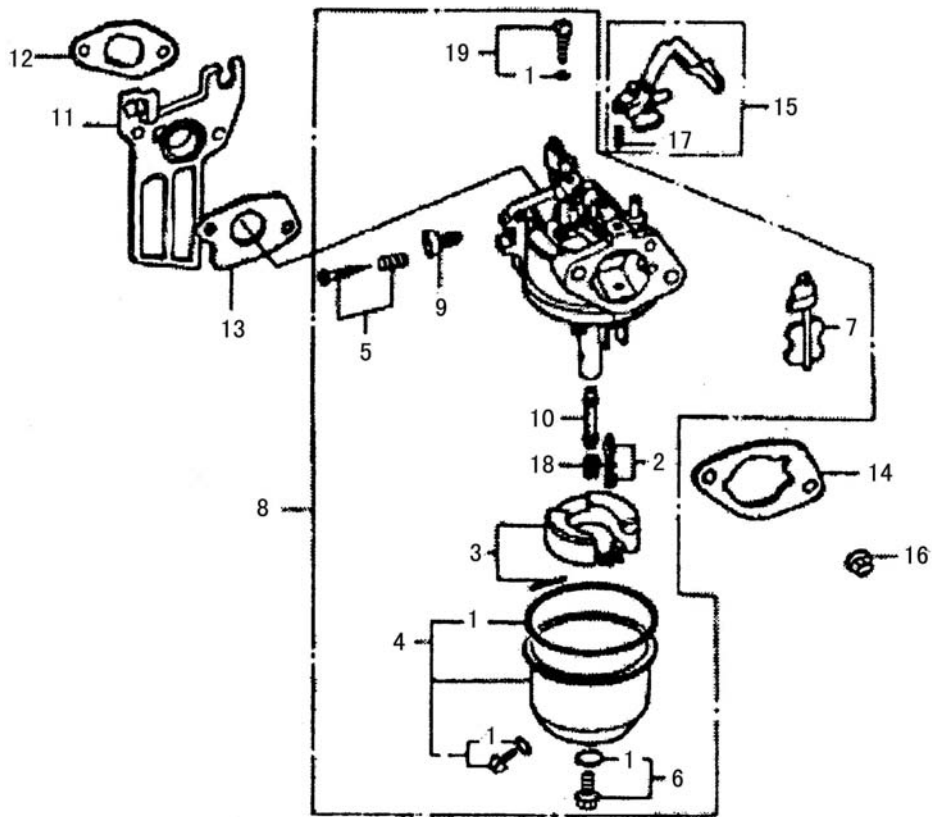


FIG.H CARBURETOR

REF. NO.	DESCRIPTION	Q'TY
1	Gasket	1
2	Needle assembly	1
3	Float	1
4	Float chamber body	1
5	Pilot screw	1
6	Drain screw	1
7	Choke	1
8	Carburetor	1
9	Adjusting screw	1
10	Main nozzle	1
11	Carburetor insulator	1
12	Carburetor packing A	1
13	Carburetor packing B	1
14	Air cleaner packing	1
15	Choke lever	1
16	Nut M6	2
17	Spring pin	1
18	Pilot jet	1
19	Main jet	1

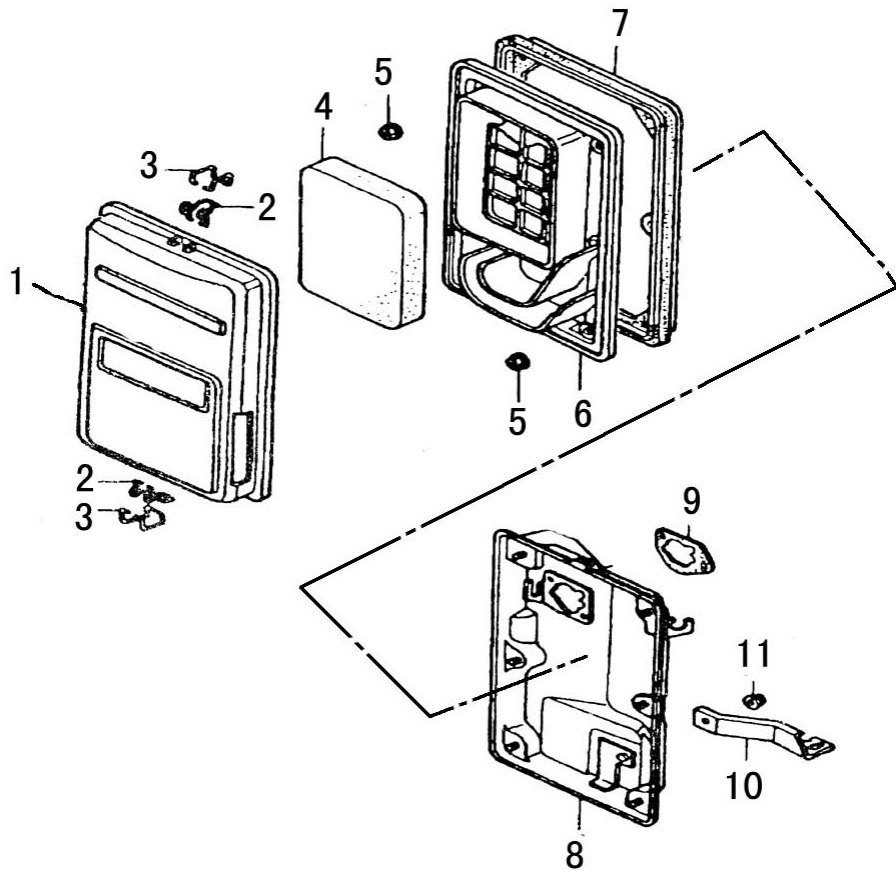


FIG.1 AIR CLEANER

REF. NO.	DESCRIPTION	Q'TY
1	Air cleaner cover	2
2	Air clean clip A	2
3	Air clean clip B	2
4	Element	1
5	Nut M5	4
6	Air cleaner separator	1
7	Air cleaner seal	1
8	Air cleaner case	1
9	Gasket	1
10	Air cleaner holder	1
11	Bolt M6×10	1

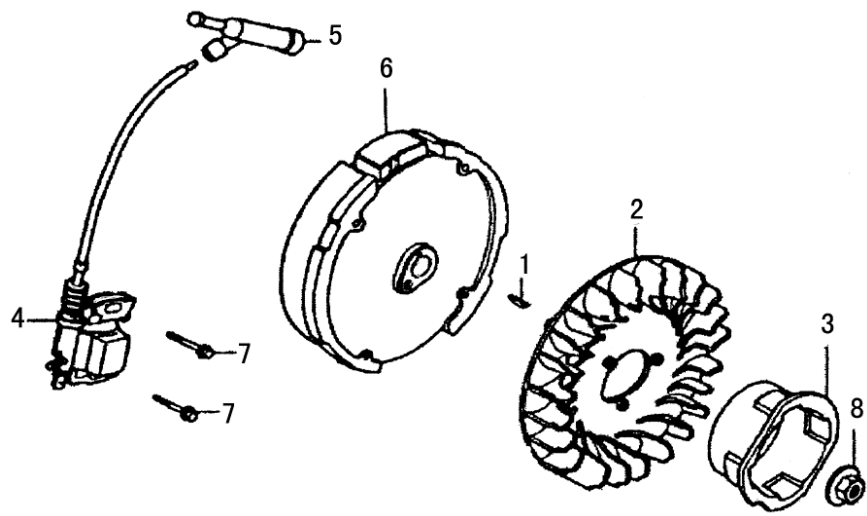


FIG.J FLYWHEEL

REF. NO.	DESCRIPTION	Q'TY
1	Semicircle key	1
2	Fan	1
3	Starter pulley	1
4	Ignition coil assy.	1
5	Spark plug cap	1
6	flywheel	1
7	Bolt M6×25	2
8	Nut M14	1

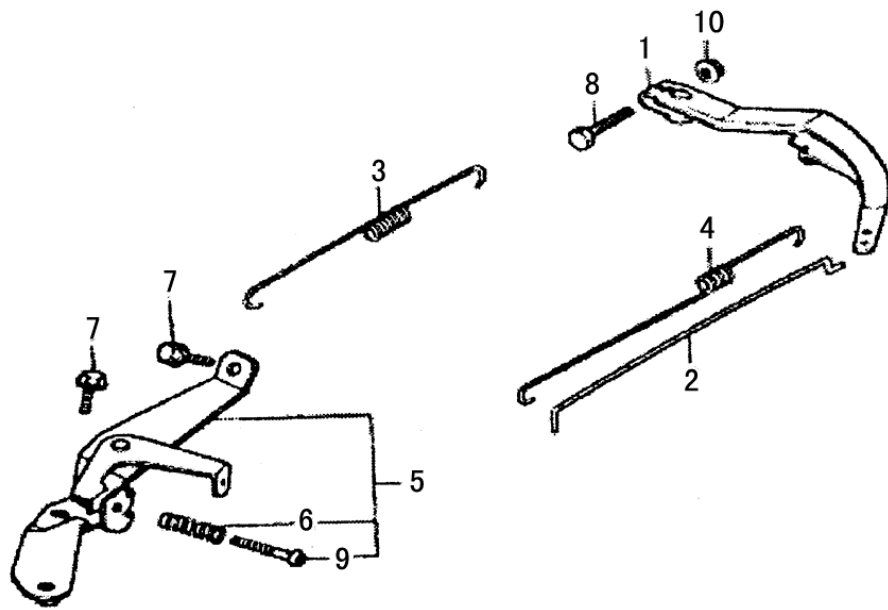


FIG.K GOVERNOR

REF. NO.	DESCRIPTION	Q'TY
1	Governor arm	1
	Governor arm	1
2	Link rod	1
3	Governor spring	1
4	Spring	1
5	Governor	1
6	Governor adjusting spring	1
7	Bolt M6x12	2
8	Governor arm bolt	1
9	Screw M5x35	2
10	Nut M6	1

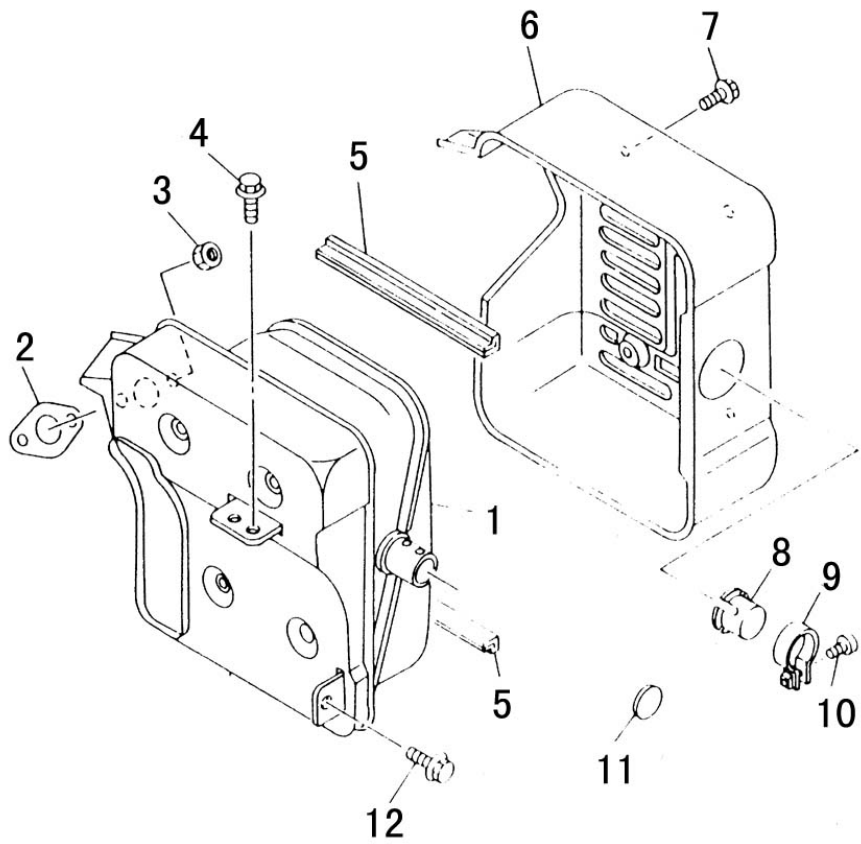


FIG1. MUFFLER

REF. NO.	DESCRIPTION	Q'TY
1	Muffler	1
2	Exhaust pipe gasket	1
3	Nut M8	2
4	Bolt M6×16	1
5	Muffler protector seal	2
6	Protector assy	1
7	Bolt M6×10	4
8	Exhaust cover	1
9	Clasp	1
10	Bolt	1
11	Net	1
12	Bolt M6×16	1

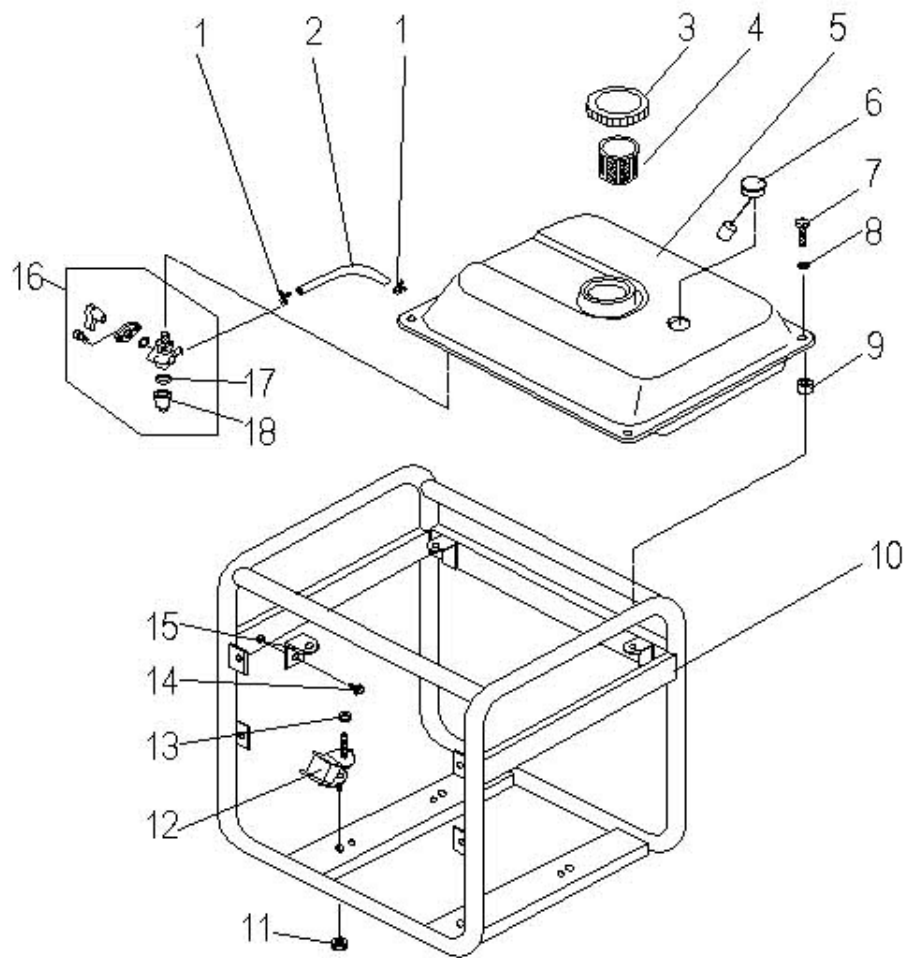
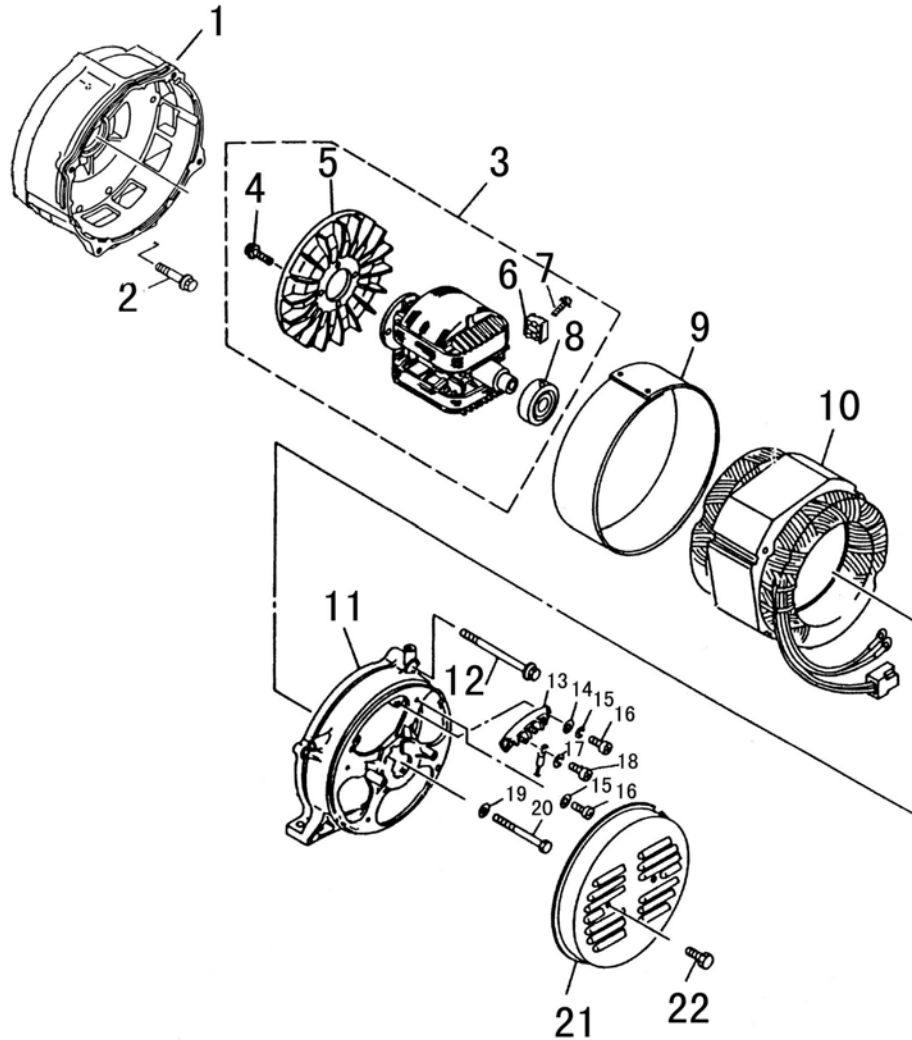


FIG.M FUELTANK FRAME

REF. NO.	DESCRIPTION	Q'TY
1	Clip	2
2	Fuel hose	1
3	Fuel cap	1
4	Fuel filter	1
5	Fuel tank	1
6	Fuel level gauge	1
7	Bolt M6×30	4
8	Washer 6	4
9	Rubber	4
10	Frame assy	1
11	Nut M8	4
12	Vibration absorber	4
13	Nut M8	4
14	Bolt M6×16	2
15	Holder	1
16	Fuel cock	1
17	Strainer	1
18	Fuel petcock cup	1

FIG N.GENERATOR



REF. NO.	PART NAME	Q'TY
1	Front Cover	1
2	Flange Bolt M8×25	4
3	Rotor Assy	1
4	Rotor Assy	1
4	Bolt M6×16	4
5	Fan blade	1
6	Rectifier	1
7	Bolt M3×14	1
8	Bearing 6203	1
9	Stator cover	1
10	Stator cover	1
10	Stator Assy	1
10	Stator Assy	1
11	Rear Cover	1
12	Flange Bolt M6×95	4
12	Flange Bolt M6×110	4
13	Plate	1
14	Washer	2
15	Washer	2
16	Bolt M6×16	2
17	Washer (copper)	8
18	Bolt M6×16(copper)	4
19	Washer	1
20	Bolt M8×190	1
20	Bolt M8×205	1
21	End Cover	1
22	Bolt M6×10	2

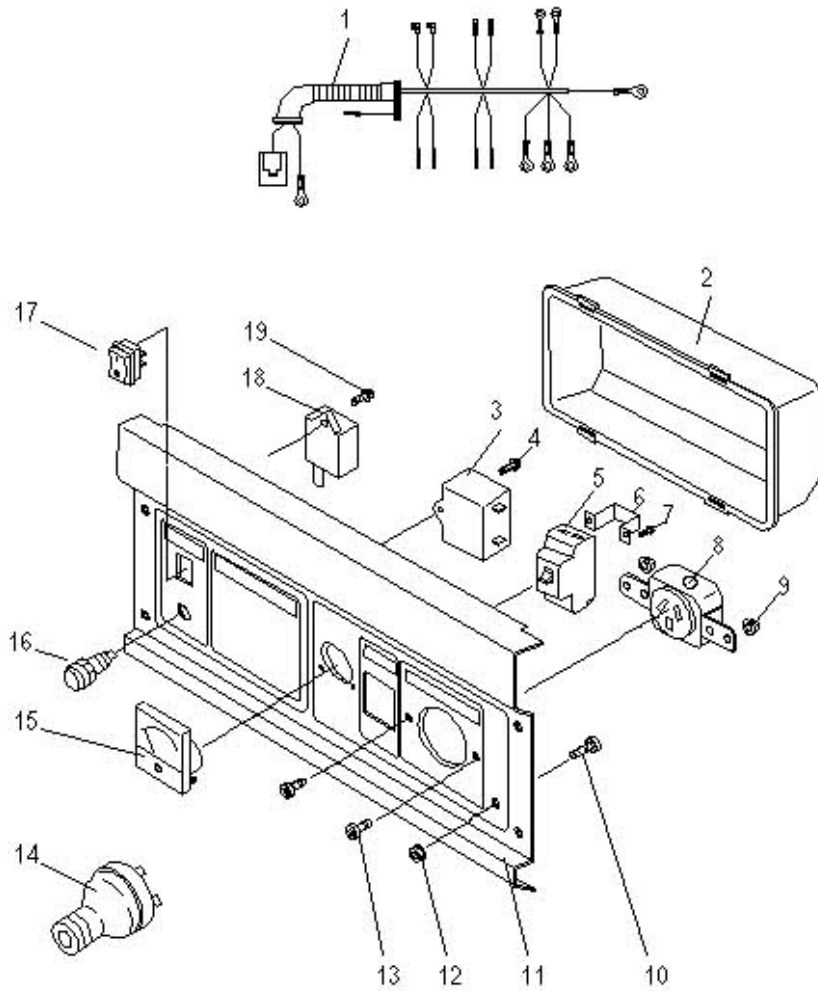


FIG O. CONTROL PANEL

REF. NO.	PART NAME	Q'TY
1	Wiring harness assy.	1
2	Back cover	1
3	Capacitor 20uf/450V	1
4	Screw M5×12	1
5	AC circuit breaker	1
6	Clasp	1
7	Screw M4×10	2
8	AC socket	1
9	Nut M4	2
10	Bolt M6×20 (copper)	1
11	Control panel	1
12	Control panel	1
13	Nut M6 (copper)	2
14	Screw M4×10	2
15	AC plug	1
16	Voltmeter	1
17	Oil warning light	1
18	Engine switch	1
19	Oil warning unit	1
	Screw M5×20	1