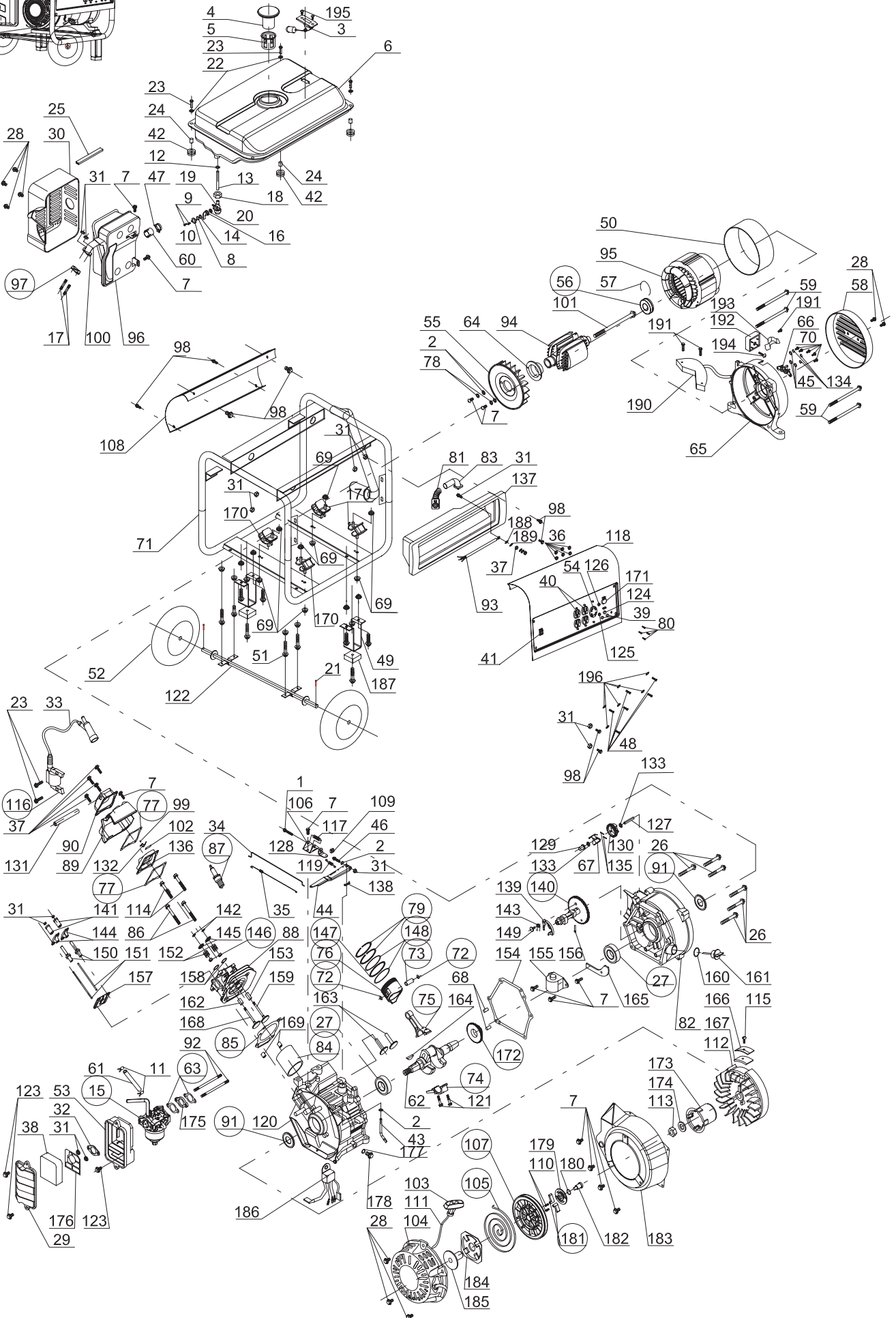
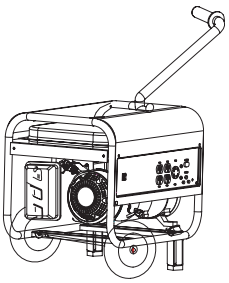


GS3001W

Parts Manual and Diagram



GENERATOR GS3001W



GS3001W Spare Parts List

Code	Parts No.	Description (Q-ty)
1	GB/5787-86	Bolt M6x35 (2)
2	GB96-85	Washer Ø6 (4)
3	WDF2500.2.3	Sender unit
4	WDF2500.2.2	Sump cover subassembly
5	WDF2500.2-3	Filtering net
6	WDF2500.2.1	Fuel tank
7	GB/5787-86	Bolt M6x12 (13)
8	WDF2500.2.4	Wave washer
9	GB818-85	Screw M3x4 (2)
10	WDF2500.2.4	Seal cover
11	WDF2500-4	Spring clamp (2)
12	GB95-85	Rubber washer Ø8
13	WDF2500.2.4	Plastic tube
14	WDF2500.2.4	Seal
15	WD168F.10	Carburator
16	WDF2500.2.4	Switch grip
17	GB/5787-86	Double end studs M6x30 (2)
18	GB6170-86	Nut M14
19	WDF2500.2.4	Switch grip cover
20	WDF2500.2.4	Special rubber gasket
21	GS3001W.6-13	Pin (2)
22	GB95-85	Washer Ø6x18 (2)
23	GB/5787-86	Bolt M6x20 (4)
24	WDF2500.2-2	Fuel tank rubber hose bush (4)
25	WDF2500.2-4	Muffler rubber strip
26	GB/5787-86	Bolt M8x35 (6)
27	A1-0917/01	Ball bearing 6205.P53 (2)
28	GB/5787-86	Bolt M6x8 (9)
29	WD168F.11	Top body case
30	WDF2500-2	Muffler guard shield
31	GB6170-86	Nut M6 (12)
32	WD168F-9	Gasket 2
33	WD168F.12.2	Spark plug cover
34	WD168FB.9-7	Steel wire pull rod
35	WD168FB.9-8	Small tension spring
36	GB6170-86	Nut M4 (4)
37	GB/T5787-86	Bolt M6x16 (5)
38	WD168FB.11-2	Air cleaner filter
39	WDF6500.5.7	DC Connection pole
40	GS6500.5.2	Electrical outlet(2)
41	GS6500.5.5	Switch
42	WDF2500.2-1	Fuel tank rubber hose (4)
43	WD168FB.9-3	Shifting fork
44	WD168FB.9-6	Pole
45	GB95-85	Washer Ø4 (3)
46	GB/5787-86	Bolt M6x30
47	WDF3000.11	Clamp
48	GB818-85	Bolt M4x10 (6)
49	GS3001W.6-9	Support (2)
50	WDF3000.1(A)	Stator jacket
51	GB/T5787-86	Bolt M8x16(8)
52	GS3001W.6-8	Wheel(2)
53	WD168FB.11.1-1	Bottom body case
54	GS6500.5.11	Electrical outlet
55	WDF3000.1(A)	Fan assy
56	A1-0916/01	Bearing 6203.2RZ
57	WDF3000.1(A)	Snap ring
58	WDF1200C	Right side cover
59	GB/5780-86	Bolt M6x105 (4)

Code	Parts No.	Description (Q-ty)
60	WDF3000.11	Nozzle
61	WDF2500-6	Rubber fuel tube
62	WD168FB.1-1A	Crankshaft
63	WD168F-6	Air intake pipe gasket (2)
64	WDF3000.1(A)	Impeller fixing base
65	WDF2500.1.1	Motor casing (end cap)
66	WDF2500.1.5	Connecting block
67	WD168FB.9.1-2	Centrifugal block
68	WD168FB-2	Centering pin (2)
69	GB6187.1-2000	Nut M8 (8)
70	GB818-85	Screw M4x12 (5)
71	GS3001W.3(A)	Frame
72	WD168F.2.2-3	Piston's pin circlip (2)
73	WD168F.2.2-1	Piston's pin
74	WD168F.2.1-2	Connecting rod cover
75	WD168F.2.1-1	Connecting rod
76	WD168F.2.2-2	Piston
77	WD168F-5	Gasket for head cover (2)
78	GB93-87	Spring washer Ø6 (2)
79	WD168F.2.2.1-2	Piston's ring
80	GB818-85	Bolt M3x6 (4)
81	WDF2500-8	Outlet line jacket
82	WD168FB.3-1	Crankcase, right
83	WDF6500-7	Angle pipe
84	WD168FB.3-2	Cylinder bush
85	WD168F-3	Cylinder head gasket
86	GB/T5787-86	Bolt M8x65 (2)
87	WD168FB-15	Spark plug
88	WD168F.4-1	Cylinder head
89	WD168F-10	Wind diversion
90	WD168FB.6-1	Cylinder head cover
91	A7-1061/03	Oil seal (2)
92	GB901-88	Double end studs M6x93 (2)
93	GS3001W.8	Wire
94	WDF3000.1(A)	Armature
95	WDF3000.1(A)	Stator
96	WDF2500-3	Muffler weldment assy
97	A7-1061/04	Gasket 5
98	GB/T5787-86	Bolt M6x12(8)
99	WD168F.8	Rivet
100	WDF3000.4	Exhaust pipe assy
101	GB/T5780-86	Bolt M8x230
102	WD168FB.8-3	Spring leaf
103	WD168F.15-7	Starting handle
104	WD168FB.15	Starter cover
105	WD168F.15-1	Start coil-spring
106	WD168FB.9.2-1	Fixation holder
107	WD168F.15-2	Starter wheel
108	GS3001W.5.3	Protect board
109	GB6170-86	Square nut M6
110	WD168FB.15	Compression spring
111	WD168F.15-3	Rope
112	WD168F.12	Fly wheel assy
113	GB6170-86	Nut M14
114	GB/T5787-86	Bolt M8x45 (2)
115	GB818-85	Screw M5x20
116	A7-1011/01	Ignition coil
117	GB93-87	Spring Ø6x 18
118	GS3001W.5.1	Panel
119	WD168FB.9.2-4	Tension spring
120	WD168FB.3-1	Crankcase, left
121	GB818-85	Screw M7x35 (2)

Code	Parts No.	Description (Q-ty)
122	GS3001W.6-12	Axle
123	GB818-85	Screw M6x14 (3)
124	WDF6500.5.8	DC Protect 10A
125	WDF1200C.2(5).1	Oil indication light
126	WDF1200C.2.2	Power supply indication light
127	WD168FB.9-1	Idle gear shaft
128	WD168FB.9.2-3	Adjust plate
129	WD168FB.9-2	Pushrod bush
130	WD168FB.1-3	Centrifugal governor
131	WD168FB.6-2	Gas outlet tube
132	WD168FB.8-4	Clamp plate
133	WD168FB.9-10	Spacer (2)
134	GB93-87	Spring washer Ø4 (3)
135	WD168FB.9.1-3	Pin (2)
136	WD168F-7	Clapboard
137	WDF2500-1	Bottom shell
138	WD168FB.9-11	Circlip
139	WD168F.5-7	Flying block
140	WD168FB.5-1	Camshaft
141	WD168F.7	Rocker arm round head (2)
142	WD168F.7-1	Valve keeper (2)
143	WD168F.5-5	Tweak spring
144	WD168F.7-13	Rocker arm (2)
145	WD168F.7-6	Valve upper spring seat (2)
146	A7-1081/05	Valve oil seal assy
147	A7-1031/09	Bushing ring
148	WD168F.2.2.1-1	Scraping ring (2)
149	WD168F.5-6	RivetØ6
150	WD168FB.7-8	Valve clearance adjusting stud (2)
151	WD168FB.7-5	Tappet rod (2)
152	WD168F.7-7	Valve spring (2)
153	WD168FB.6-2	Exhaust valve guide
154	WD168FB-1	Crankcase gasket
155	WD168F.14	Oil height inductor
156	WD168F.5-4	Spring
157	WD168F.7-4	Tappet rod vave (2)
158	WD168F.7-10	Spring saddle
159	WD168FB.7-2	Exhaust valve
160	WD168FB.4-4	"O"-ringØ14
161	WD168FB.4-3	Oil supply cock
162	WD168FB.6-2	Intake valve guide
163	WD168FB.7-12	Pillar (2)
164	WD168FB.1	Key 15x4x4
165	WD168F.5-2	Press line plate
166	WD168F.12.2	Magnet steel clamp plate
167	WD168F.12.2	Magnet steel of flying wheel
168	WD168F.7-11	Air intake valve
169	WD168F-4	Location pin (2)
170	WDF2500.7	Left and right shockproof mounting feet (4)
171	GS3000.5.4	AC permutator 15A
172	WD168FB.1-2	Crankshaft timing gear
173	WD168F.15-9	Starter barrel
174	GB93-87	Lock washer Ø14
175	WD168F.10	Heat insulating mattress
176	WD168FB.11-4	Orifice plate
177	GB95-85	Washer Ø10
178	GB/5787-86	Bolt M10x16
179	WD168F.15-6	Guide plate
180	GB93-87	Circlip Ø12
181	WD168F.15-5	Clutch block
182	WD168FB.15.1-2	Step bolt
183	WD168F.13	Cowling

Code	Parts No.	Description (Q-ty)
184	WD168F.15-4	Guide post bushing
185	WD168F.15-8	Spring holder
186	WDF1200C-27	Pilotlamp controller
187	GS3001W.6-10	Rubber tray
188	GB93-87	Spring gasket Ø6
189	GB96-85	Gasket Ø6
190	WDF2500.1.4	Booster
191	GB/T5787-86	Bolt M5x12
192	KBPC2506	Rectifier comop
193	WDF2500.1.6	Carbon brush
194	GB818-85	Bolt M4X16
195	GB818-85	Bolt M6X12
196	GB95-85	Gasket Ø4



1-877-270-7772
6226 Danville Road
Mississauga, ON, L5T 2H7