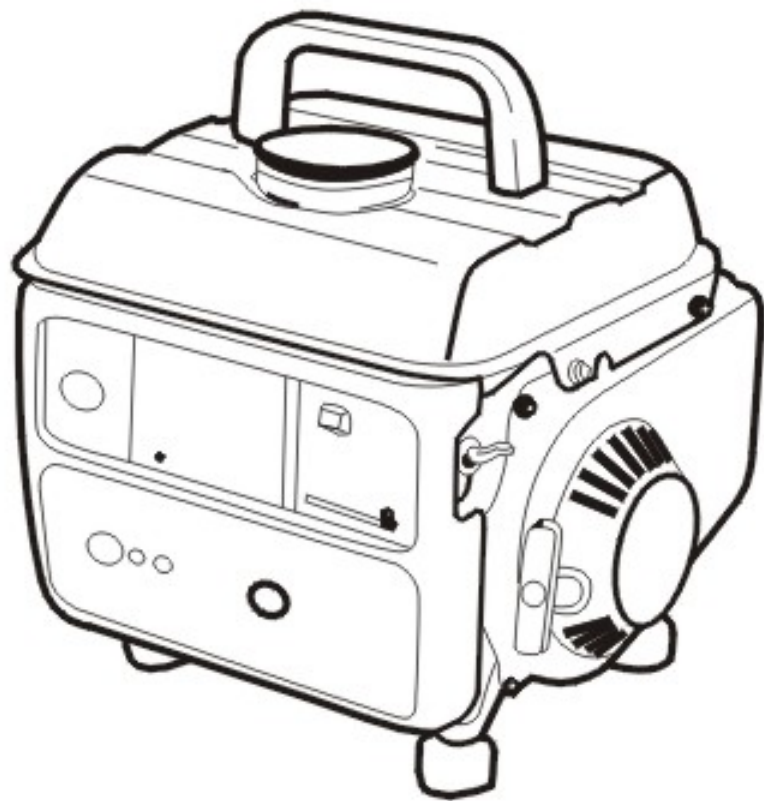


**P3-POWER**



Owner's Manual  
Gasoline Generator  
**GS950W**

## SAFETY INFORMATION

**EXHAUST FUMES ARE POISONOUS.**

Never operate the generator indoors.



Never operate in rain or snow.



**FUEL IS HIGHLY FLAMMABLE.**

Stop the generator when re-fueling.



Avoid placing inflammables near the generator.



No smoking while refuelling.

Take care not to spill fuel.



Never touch with wet hands.



Do not connect to commercial Power outlet.

Do not connect with another.



Do not fill above fuel filter top.

**Oil-gas mix MUST BE USED in the Generator.**  
**If not, the Generator will overheat.**  
**Gas-Oil ratio = 50:1**

## PRE-OPERATION CHECKS

Fuel tank capacity: 4 Litres.

Use fuel tank cap to measure oil as the diagrams below.

Ratio = Gas 50 : 1 Oil	
1 Litre Gas : 0.2 Litres Oil	
2 Litre Gas : 0.4 Litres Oil	
3 Litre Gas : 0.6 Litres Oil	
4 Litre Gas : 0.8 Litres Oil	

Shake the fuel tank before starting the Generator.

## **STARTING THE GENERATOR.**

**DO NOT** connect any electrical apparatus before starting.

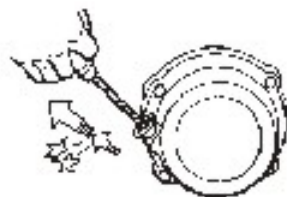
1. Turn the fuel valve lever to ON



2. Turn the choke lever to 1



3. Turn the Generator switch to ON



4. Pull slowly on the recoil starter until engaged, then pull it briskly.

5. Return choke lever.



**STOPPING THE GENERATOR.**  
**BEFORE STOPPING,** turn off any electrical apparatus.

1. Turn engine switch to STOP



2. Turn fuel valve lever to OFF

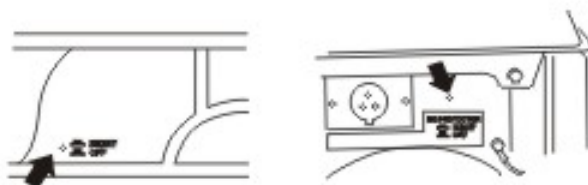
## CONNECTON

1. Wind lead 2 or 3 turns around the handle.
2. Start the Generator.
3. Plug into AC socket.

Connect red lead (provided as accessory) to positive (+) terminal, and black to negative (-)

## SAFETY DEVICES.

Press to reset AC or DC protector.  
Reduce load within rated output if AC or DC (if equipped) turns off.



1) ON      2) OFF

## PERIODIC MAINTENANCE

Items	Remarks	Every 50 hrs.	Every 150 hrs.
		or every month	or every 3 months
Spark Plug:	Remove carbon. Ad just gap. Replace if necessary.	●	
Air Filter:	Clean Replace if necessary.		●
Fuel Filter:	Clean Replace if necessary.		●
Decarbonisation	Clean Replace if necessary.		●

### Spark Plug

1. Remove spark plug.
2. Remove carbon deposits
3. Check for discoloration ( Standard: Tan Colour)
4. Check spark plug gap. 0.7~0.8mm

### Air Filter

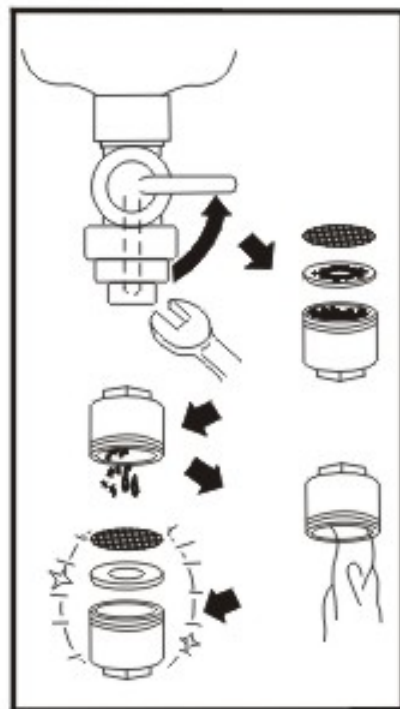
1. Remove air filter
2. Wash in solvent
3. Apply some motor oil to air filter
4. Squeeze out excess motor oil

Never run the generator without element.

## PERIODIC MAINTENANCE

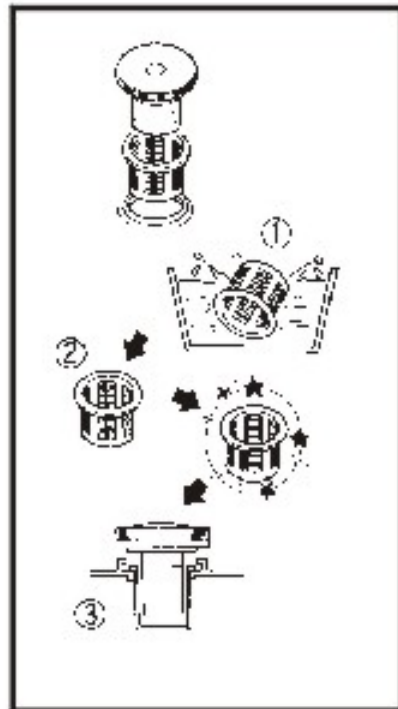
### Fuel Filter

1. Stop generator
2. Turn fuel valve lever to OFF.
3. Clean with solvent.





### Decarbonisation

1. Clean in solvent.
2. Wipe off.
3. Insert.



## Application Range for your GS950W Generator

Apparatus		GS950W	Power Factor
	60Hz	~800W	1
	60Hz	~600W	0.7~0.8
	60Hz	~700W	0.7~0.95

## TROUBLE SHOOTING

### **GENERATOR WONT START**

1. Check fuel  
Fuel valve to ON
2. Engine switch to ON
3. Check Spark plugs

### **If Generator still won't start, check the following**

1. Fuel cock clogging
2. Air filter clogging

## SPECIFICATONS

	<u>Unit</u>	<u>GS950W</u>
AC Output		
Rated Voltage	V	120
Frequency	Hz	60
AC Current	A	6.7
Rated Output	VA	800
Engine		
Operation hours 60Hz		4.5



### **Limited Warranty**

GOSS Power Products Ltd. (“GOSS”) warrants as limited herein to the end-user original purchaser of the gasoline or diesel powered generator (the “Generator”) to which this limited warranty, that the Generator shall be free of defects in material and workmanship for a period of (i) one year if purchased by a retail consumer for regular domestic usage; or (ii) 90 days if purchased for professional or industrial usage, in each case from the date of original purchase.

In the event of malfunctions or failure of your Generator, simply deliver or send the Generator, along with proof of purchase, within the applicable warranty period to GOSS. GOSS reserves the right to inspect the claimed defective part or parts to determine if the defect or malfunction complaint is covered by this limited warranty. GOSS shall, within 60 days after receipt of the product, at its option, repair and/or replace the defective part or parts free of charge (other than delivery costs to transport the Generator or any part or parts thereof). This limited warranty shall only cover defects arising from normal usage, GOSS assumes no responsibilities whatsoever if the Generator should fail during the limited warranty period by reason of: (i) misuse, negligence, physical damage or accidents; (ii) lack of maintenance (see owner’s manual for proper maintenance); (iii) repair by any unauthorized party during the limited warranty period; or (iv) damage caused by connection to an improper voltage input (see specification label on your Generator). The limited warranty set out above is further qualified by the restrictions on usage and related matters as are set out in the owner’s manual. Any contravention of the terms in the owner’s manual shall render this limited warranty null and void and of no further effect.

GOSS makes no further warranties or representations, express or implied except those contained herein. No representative dealer is authorized to assume any other liability regarding the Generator. The duration of the implied limited warranty granted under any Provincial or State law, including warranties of merchantability and fitness for particular purpose are limited in duration to the express duration provided for herein. GOSS shall in no event be liable for direct, indirect, special or consequential damages.

Should your Generator fail to operate under the terms of this limited warranty, please contact

**GOSS Power Products Ltd.**

**6226 Danville Rd, Mississauga, ON, L5T 2H7**

**1-877-270-7772**

**[www.gosspower.com](http://www.gosspower.com)**