



GS950W

Parts Manual and Diagram



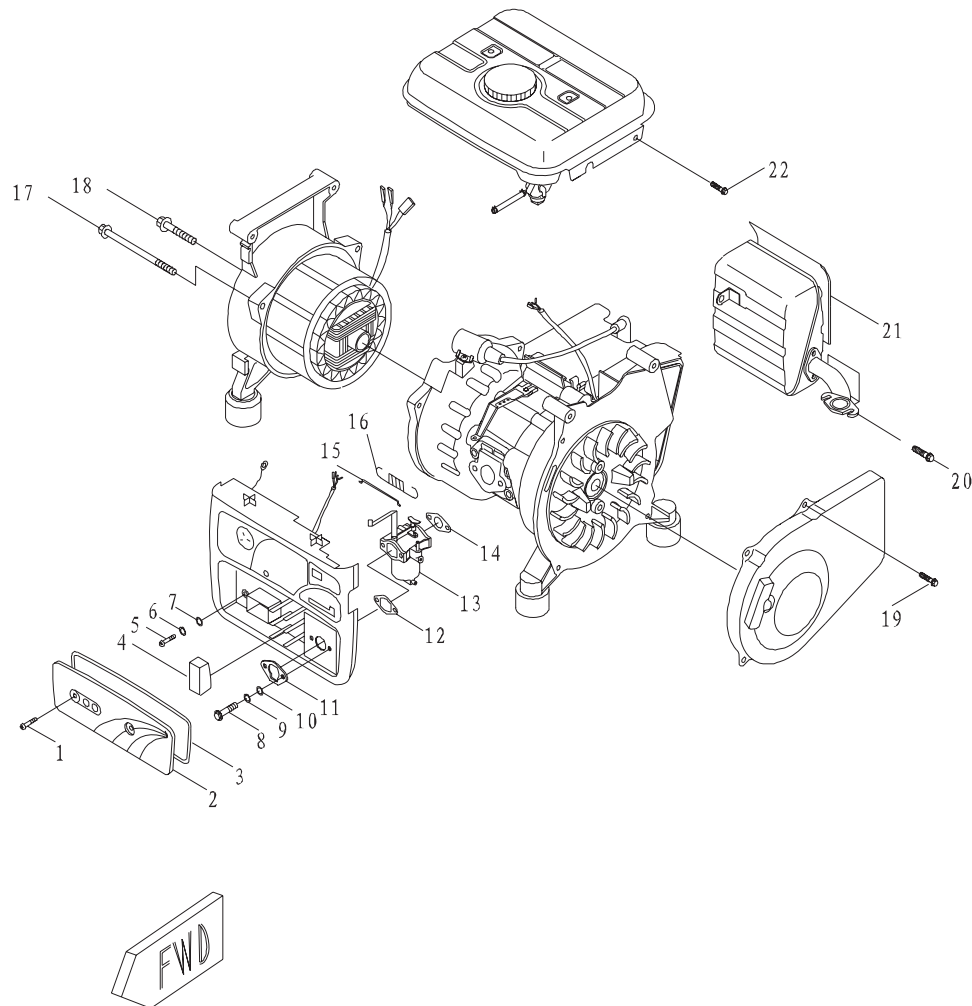


FIG. 1 CRANKCASE, FLYWHEEL

REF. NO.	PART NO.	DESCRIPTION	QUANTITY
1	060406018	Cross recessde pan head screw M6x18	2
2	09510009	Air filter cover	1
3	09510033	Air filter cover ring	1
4	09510032	Air filter element	1
5	060406018	Cross recessde pan head screw M6x18	1
6	030206001	Spring washer Ø6	1
7	030106001	Gasket Ø6	1
8	060406065	Cross recessde pan head screw M6x65	2
9	030206001	Spring washer Ø6	2
10	030106001	Gasket Ø6	2
11	09500062	Air filter flange	1
12	09500039	Gasket	1
13	09500038	Carburetor	1
14	09500035	Gasket	1
15	09500043	Link rod	1
16	09500042	Spring	1
17	050206080	Hexagon bolt with flangeM6×80	3
18	050206012	Hexagon bolt with flangeM6×12	1
19	050206012	Hexagon bolt with flangeM6×12	4
20	0501060161	Hexagon bolt M6×16-8.8	2
21	09513000	Muffler	1
22	050206012	Hexagon bolt with flangeM6×12	4

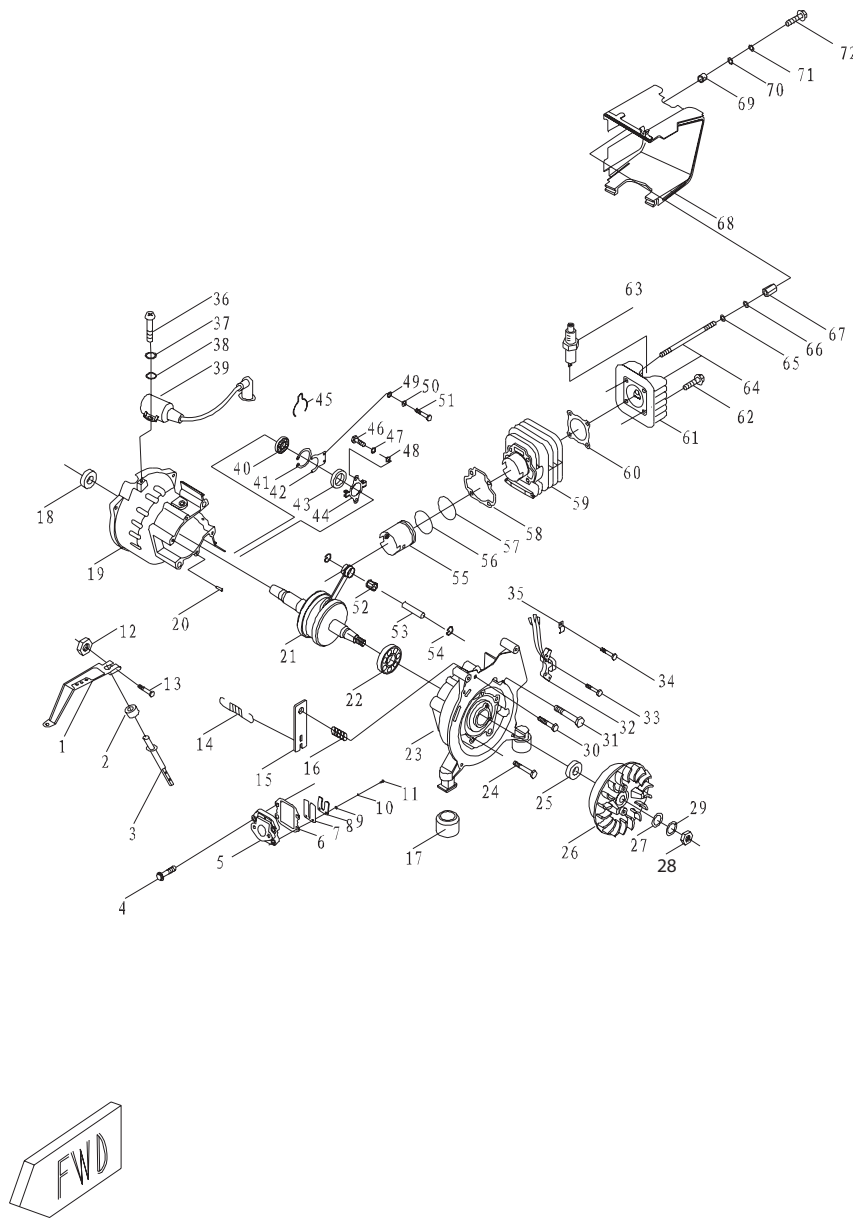


FIG. 2 MOTOR

REF. NO.	PART NO.	DESCRIPTION	QUANTITY
1	09500041	Speed adjusting level	1
2	09500014	Oil seal Ø6	1
3	09500011	Shifter	1
4	060406018	Cross recessde pan head screw M6x18	4
5	09505001	Air inlet ralve mount	1
6	09500026	Ralve mount gasket	1
7	09505002	Ralve leaf	1
8	09505003	Sheet	1
9	030106001	Gasket Ø3	2
10	030206001	Spring washer Ø3	2
11	060403008	Cross recessde pan head screw M3x8	2
12	040306001	Nut M6	1
13	060406016	Cross recessde pan head screw M6x16	1
14	09500042	Speed governing spring	1
15	09500045	Speed governing gasket	1
16	09500040	Speed spring	1
17	09500056	Shockproof foot	2
18	09500004	Oil seal Ø20	1
19	09500001	Crankcase (lift)	1
20	09500019	Locating pin	2
21	09501000	Crank shaft	1
22	09500003	Bearing 6004	1
23	09500002	Crankcase (right)	1
24	0502060501	Hexagon bolt with flange M6 x50-8.8	4

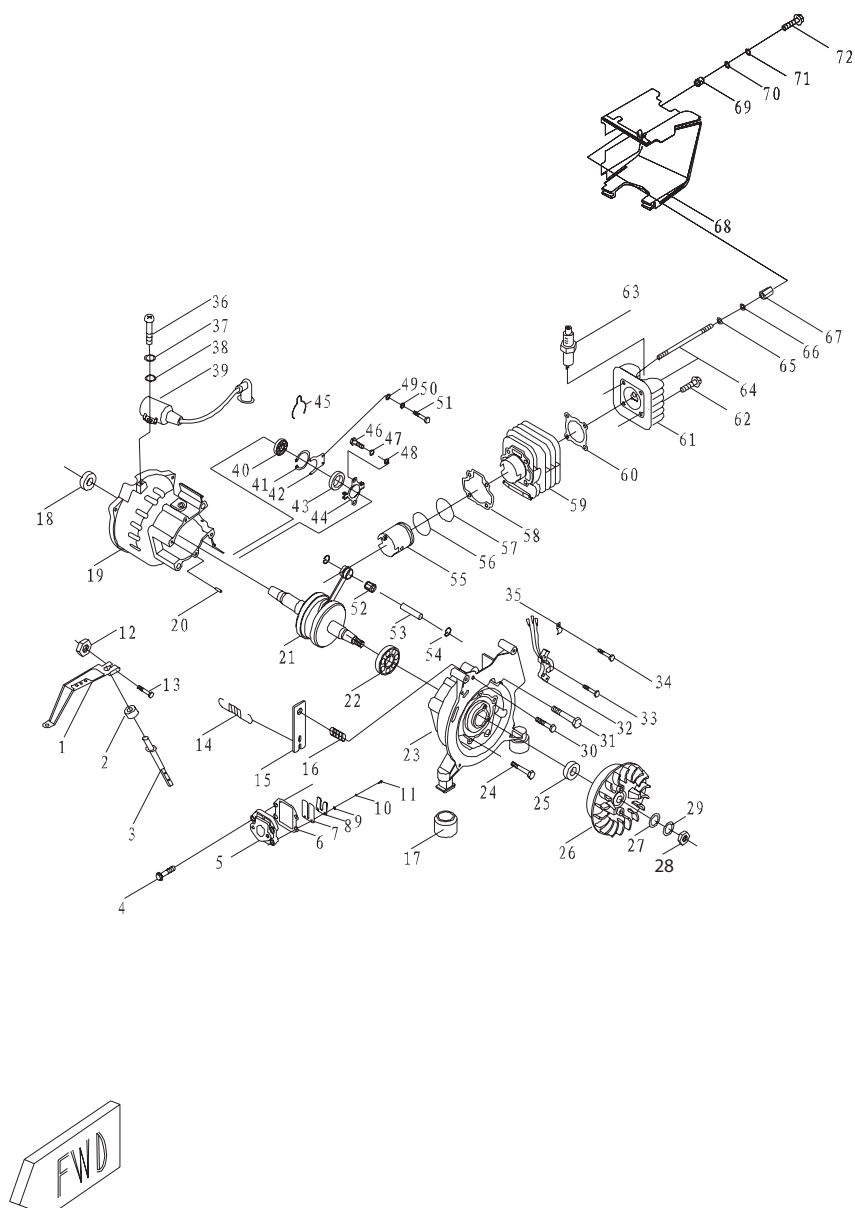
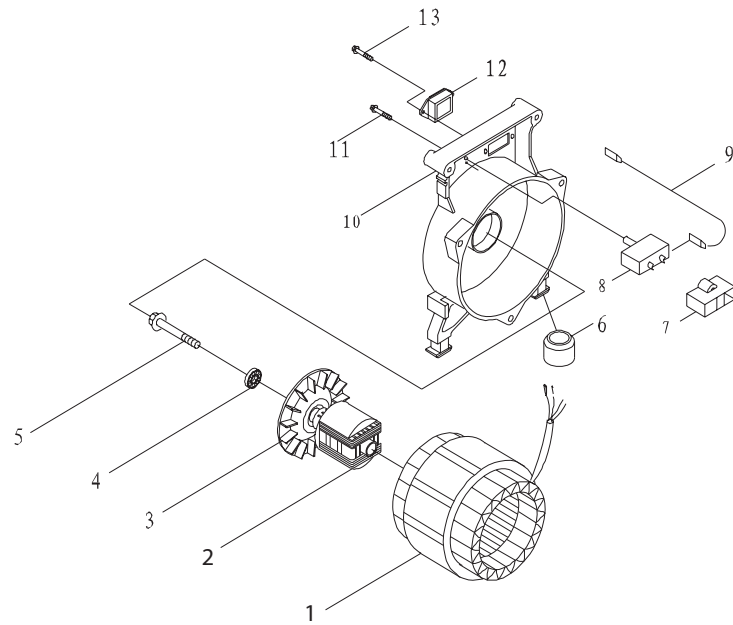


FIG. 4 MOTOR

REF. NO.	PART NO.	DESCRIPTION	QUANTITY
49	030103001	Gasket Ø3	2
50	030203001	Spring washer Ø3	2
51	060403008	Cross recessde pan head screw M3x8	2
52	09500057	Needle bearing	1
53	09500010	Pistol pin	1
54	09500009	Pistol pin circlip	2
55	09500005	Pistol	1
56	09500007	Oil ring	1
57	09500008	Compression ring	1
58	09500022	Clinder gasket	1
59	09500002	Clinder	1
60	09500025	Clinder hand gasket	1
61	09500028	Clinder hand	1
62	050206100	Clinder head bolt	2
63	09500031	Spark plug	1
64	050906113	Stud	2
65	030106001	Gasket Ø6	2
66	030206001	Spring washer Ø6	2
67	041400001	Nut	2
68	09500027	Clinder shroud	1
69	09500027	Bush	2
70	030106001	Gasket Ø6	2
71	030206001	Spring washer Ø6	2
72	050106010	Hexagon bolt M6×10	2

FIG. 5 ALTERNATING CURRENT DYNAMO



FWD

REF. NO.	PART NO.	DESCRIPTION	QUANTITY	REMARKS
1	06507000D	Stator (35mm)	1	TG 650
	06507001D	Stator (40mm)	1	TG 650
	09507000D	Stator (45mm)	1	TG 950
	09507001D	Stator (53mm)	1	TG 950
2	06506000D	Rotor (35mm)	1	TG 650
	06506001D	Rotor (40mm)	1	TG 650
	09506000D	Rotor (45mm)	1	TG 950
	29506001D	Rotor (53mm)	1	TG 950
3	09506009	Fan	1	
4	09506008	Bearing 6203 Ø43	1	
5	051008148	Bolt	1	TG 650
	051008160	Bolt	1	TG 950
6	09500056	Shockproof foot	2	
7	09516002	Overload protector switch mount	1	
8	09512002	Overload protector switch	1	
9	09516001	Connection wire	1	
10	0950026D-1	Frame rear	1	
11	060302010	Cross recessed countersunk (flat) head tapping screw	2	
12	09516000	Receptacle	1	
13	060403020	Cross recessed pan head screw M3x20	2	

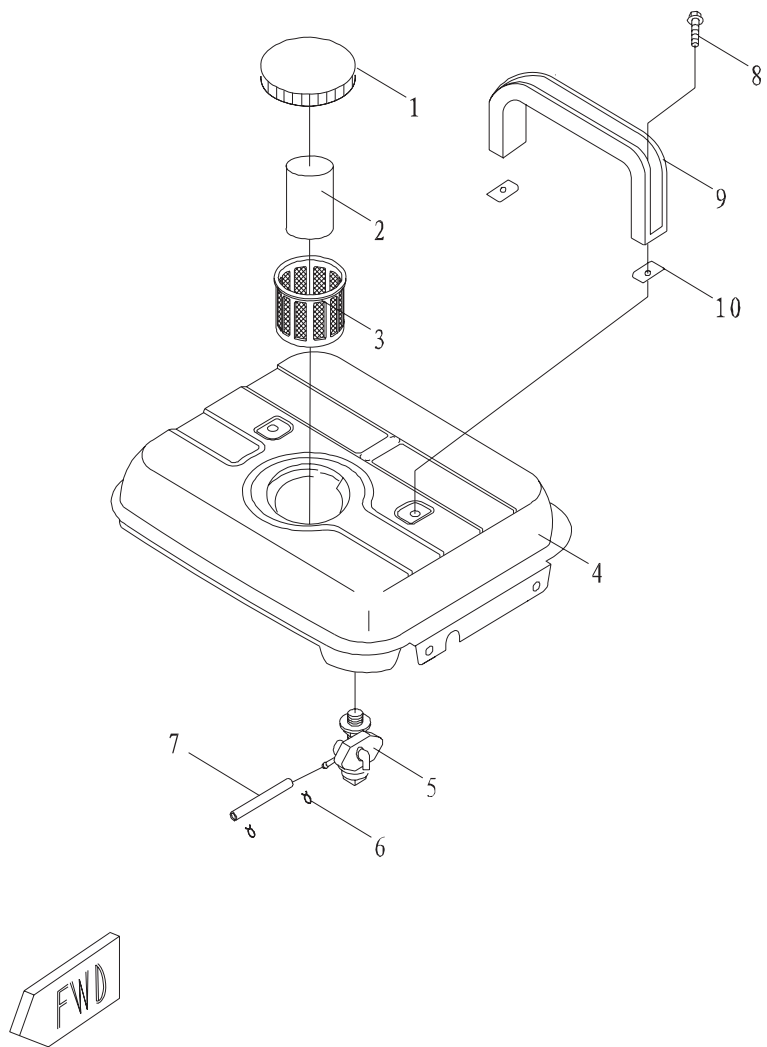


FIG. 6 FUEL TANK

REF. NO.	PART NO.	DESCRIPTION	QUANTITY
1	09559001	Fuel tank cover	1
2	09559004	Oil cup	1
3	09559005	Fuel filter	1
4	09514000	Fuel tank	1
5	09514003	Fuel control valve	1
6	09500065	Pipe spring	2
7	02700059	Pipe	1
8	060406018	Cross recessde pan head screwM6x18	2
9	09500063	Handle	1
10	09500064	Gasket	1

FWD

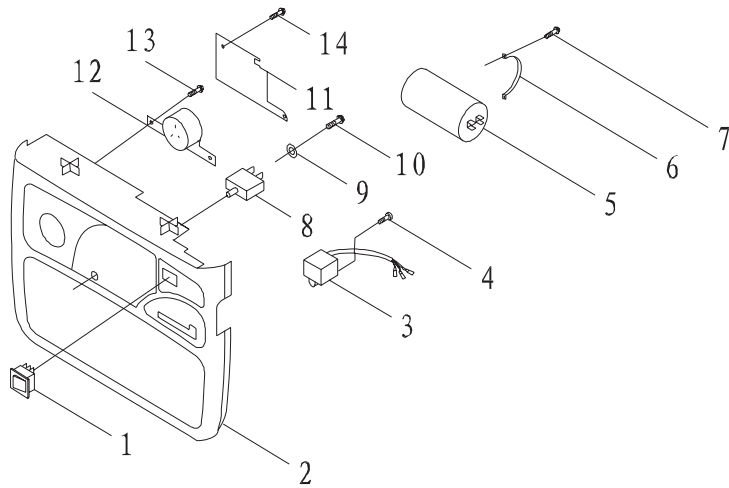
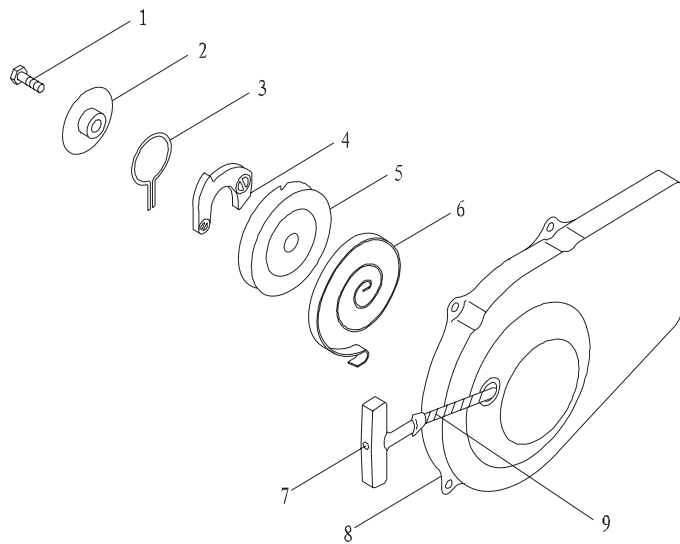


FIG. 7 FRONT PANEL

REF. NO.	PART NO.	DESCRIPTION	QUANTITY	REMARKS
1	09510029	Switch	1	
2	09510007	Front panel	1	
3	09511000	Ignitor	1	
4	060503018	Cross recess pan head tapping screw	1	
5	09510036	Capacitor	1	
	09510038	Capacitor	1	
	09510037	Capacitor	1	
	09510039	Capacitor	1	TG 950
6	09510035	Capacitor clip	1	
7	060503012	Cross recess pan head tapping screw	2	
8	06512001	Overload protector switch	1	TG 650
	06512002	Overload protector switch	1	TG 650
	06512003	Overload protector switch	1	TG 950
	09512001	Overload protector switch	1	TG 950
9	030106001	Gasket Ø6	1	
10	060503012	Cross recess pan head tapping screw	1	
11	09510034	Cover plate	1	
12	09510012	Receptacle	1	
13	060503012	Cross recess pan head tapping screw	2	
14	060503012	Cross recess pan head tapping screw	2	



FWD

FIG. 8 STARTING COVER

REF. NO.	PART NO.	DESCRIPTION	QUANTITY
1	050206012	Hexagon bolt with flange M6 x12	1
2	09508016	Drive plate	1
3	09508017	Clip spring	1
4	09508015	Hearing plate	1
5	09508012	Drive wheel	1
6	09508014	Pawling spring starter	1
7	09508018	Starter handle	1
8	09508002	Starting cover	1
9	09508009	Starter string	1



1-877-270-7772
6226 Danville Road
Mississauga, ON, L5T 2H7